

20 March 2026

Our ref: 1590/lj/LW

To whom it may concern

Dear Sir or Madam:

NOTIFICATION REGARDING OPPORTUNITY TO PARTICIPATE IN ENVIRONMENTAL AUTHORISATION APPLICATION PROCESS FOR THE PROPOSED THUNGELA OPERATIONS (PTY) LTD COAL BED METHANE PRODUCTION PROJECT, IN THE LEPHALALE LOCAL MUNICIPAL AREA, LIMPOPO PROVINCE, SOUTH AFRICA.

Thungela Operations Proprietary Limited, a member of the Thungela Resources Limited Group (hereafter referred to as the Applicant) has appointed Environmental Impact Management Services (Pty) Ltd (EIMS) as the Environmental Assessment Practitioner (EAP) to assist with undertaking the required authorisation processes (including the statutory public participation), and to compile and submit the required documentation in support of application for:

- Environmental Authorisation (EA) in accordance with the NEMA- Listing Notice (LN) activities: LN2 Activities: 20 and 20A. Full list of activities to be indicated in Scoping Report.
- Atmospheric Emissions Licence in accordance with the requirements of the National Environmental Management: Air Quality Act- NEM:AQA (Act 39 of 2004)- Scheduled Activity: Sub-category 1.4 (Storage and Handling of Petroleum Products).
- Waste Management Licence in accordance with the requirements of the National Environmental Management: Waste Act- NEM:WA (Act 59 of 2008) - Listed activities: A1; A6; A7; A12; A14; B1; B10; B11; C1 and C2.
- Water Use Licence (WUL) in accordance with the National Water Act – NWA (Act 36 of 1998) - Listed activities: Section 21 water uses: 21a; 21b; 21c; 21e; 21f; 21g; 21i; and 21j.

Amendment of or additional listed activities may be identified during the process.

The Applicant has submitted a Production Right (PR) application to the Petroleum Agency SA (PASA) for coal bed methane (CBM) in the Lephalale Local Municipality, Limpopo Province, South Africa, which was subsequently accepted. Exploration activities which were undertaken in accordance with an Exploration Right (ER) have indicated a potentially viable and extractable CBM resource. The Applicant consequently has applied to the PASA for a PR to extract and produce (utilize) the CBM resource.

The Applicant aims to extract the CBM resource from the PR area in a phased manner. At present a total of 3 production phases are expected to reach the conceptual full field production which spans a total surface area of approximately 134 155 hectares (ha). The first production phase comprises of 333 production wells which will be connected via a buried gas gathering network of pipelines to a centralised gas processing facility. **This application only covers the first production phase and additional permitting or licencing will be required at a later stage for the remaining phases of the wellfield development should these be pursued.**

To optimally produce gas, hydraulic stimulation (fracturing) of the target coal seams is being proposed. The gas processing includes a compression and liquefaction facility to allow for the production of the final product, Liquefied Natural Gas (LNG), which will be distributed off site via road transport. The production is planned to span a period of 30 years commencing from the date that all relevant approvals and licences have been obtained.

The full PR application area encompasses 224 farm portions and a total area of approximately 134 155 ha. The first phase (the EA application area) will comprise a smaller area within the broader PR area and will be the subject of this EIA and application for EA. The EA application area encompasses 20 farms and covers an area of approximately ~20 443 ha. The PR and the EA application area falls within the Lephalale Local Municipality and Waterberg District Municipality,

Limpopo Province. The EA Application area is situated approximately 14km to the northwest of Lephalale town, 5km north of Marapong, and approximately 11km north west of Onverwacht. The appended locality map provides a spatial representation of the project extent.

EIMS will be following the procedures defined in the Environmental Impact Assessment (EIA) Regulations (GRN982 of 2014, as amended) for undertaking a Scoping and Environmental Impact Assessment (EIA) process. In accordance with Chapter 6 of the EIA Regulations, a public participation process will be undertaken. You are hereby invited to register and comment on the proposed project and application/s. In order to ensure that you are identified and registered as an Interested and Affected Party (I&AP) and that your comments are captured, please submit your name, contact details, the reason for your interest or any comments, in writing or telephonically, to EIMS. Please note that only registered I&AP's will be informed of future project information and opportunities for participation.

By registering as an I&AP you consent to the collection and processing of your personal information as per the EIMS Privacy Notice available at www.eims.co.za/public-participation. In order to avoid missing out on opportunities for public participation please submit I&AP registrations, or any queries, comments, or concerns with regards to this application, as soon as possible to EIMS at:

Contact Person: Mbali Tshabalala.

EIMS Reference Number: 1590

Postal Address: P.O. Box 2083; Pinegowrie; 2123

Telephone: (011) 789 7170

Fax: (086) 571 9047

E-mail: LCBM@eims.co.za

Please include the project reference number **1590** in all correspondence.

Please feel free to contact the undersigned if you have any queries or concerns.

Kind Regards,

EIMS Public Participation Team

20 Maart 2026

Ons verwysing: 1590/lj/BW

Aan wie dit mag aangaan

Geagte Belangstellende en Geaffekteerde Party:

KENNISGEWING MET BETREKKING TOT GELEENTHEID OM AAN DIE OMGEWINGSMAGTIGINGPROSES VIR DIE VOORGESTELDE THUNGELA BEDRYWIGHEDE (EDMS) BPK STEENKOOLBEDMETAANPRODUKSIEPROJEK, IN DIE LEPHALALE PLAASLIKE MUNISIPALITEIT, LIMPOPO PROVINSIE, SUID-AFRIKA.

Thungela Operasies Eiendoms Beperk, 'n Lid van die Thungela Resources Beperk Groep (hierna verwys na as die Applikant/Aansoeker) het Environmental Impact Management Services (Edms) Bpk (EIMS) as die Omgewingsbeoordelingspraktisyn (OEP) aangestel om die nodige omgewingsmagtiging en gepaardgaande konsultasieprosesse te onderneem. EIMS sal die vereiste dokumentasie saamstel en indien ter ondersteuning van aansoeke vir:

- Omgewingsmagtiging (OM) in ooreenstemming met die NEMA- Noteringskennisgewing (NK) aktiwiteite: NK2 aktiwiteite: 20 en 20A. Volledige lys van aktiwiteite sal in die omvangsbeplanning verslag voorsien word.
- Atmosferiese Vrystellingslisensie (AVL) in ooreenstemming met die vereistes van die Wet op Nasionale Omgewingsbestuur: Luggehalte- WNOB:LH (Wet 39 van 2004)- Geskeduleerde aktiwiteit: Sub-kategorie 1.4 (Opberging en hantering van petroleumprodukte).
- Afvalbestuurslisensie in ooreenstemming met die vereistes van die Nasionale Omgewingsbestuur: Afvalwet- WNOB:AW (Wet 59 van 2008) - Gelyste aktiwiteite: A1; A6; A7; A12; A14; B1; B10; B11; C1 en C2.
- Watergebruiklisensie (WGL) in ooreenstemming met die Nasionale Waterwet – NWA (Wet 36 van 1998) - Gelyste aktiwiteite: Artikel 21 watergebruik: 21a; 21b; 21c; 21e; 21f; 21g; 21i; en 21j.

Wysiging van of bykomende gelyste aktiwiteite kan tydens die proses geïdentifiseer word.

Die aansoeker het 'n Produksiereg (PR)-aansoek by die Petroleumagentskap SA (PASA) ingedien vir steenkoolbedmetaan (SBM) in die Lephalale Plaaslike Munisipaliteit, Limpopo-provinsie, Suid-Afrika, wat daarna aanvaar is. Eksplorasielike aktiwiteite wat uitgevoer is in ooreenstemming met 'n Eksplorasielike Reg (ER) het 'n moontlik lewensvatbare en ontginbare SBM-hulpbron aangedui. Die Applikant het gevolglik by PASA aansoek gedoen vir 'n PR om die SBM-hulpbron te onttrek en te produseer (te gebruik).

Die aansoeker poog om die SBM-hulpbron uit die PR-gebied in 'n gefaseerde wyse te onttrek. Tans word 'n totaal van 3 produksiefases verwag om die konseptuele volle veldproduksie te bereik, wat 'n totale oppervlakte van ongeveer 134 155 hektaar (ha) beslaan. Die eerste produksiefase bestaan uit 333 produksieputte wat via 'n ondergrondse gasversamelnets van pyplyne aan 'n gesentraliseerde gasverwerkingsfasiliteit verbind sal word. **Hierdie aansoek dek slegs die eerste produksiefase en addisionele permitte of lisensiëring sal op 'n later stadium vereis word vir die oorblywende fases van die putveldontwikkeling indien dit beplan sal word.**

Om gas optimaal te produseer, word hidroliese stimulasie (frakturering) van die teikensteenkoolnate voorgestel. Die gasverwerking sluit 'n kompressie- en vloeibaarmakingsfasiliteit in om die produksie van die finale produk, Vloeibare Natuurlike Gas (LNG), moontlik te maak, wat via padvervoer van die perseel versprei sal word. Die produksie word beplan om 'n tydperk van 30 jaar te strek vanaf die datum waarop alle relevante goedkeurings en lisensies verkry is.

Die volledige PR-aansoekgebied (alle fases) beslaan 224 plaasgedeeltes en 'n totale oppervlakte van ongeveer 134 155 ha. Die eerste fase (die OM-aansoekarea) beslaan 'n kleiner area binne die breër PR-gebied. Hierdie kleiner area word nou voor aansoek gedoen vir OM en is ingesluit by hierdie omgewingsimpakassessering. Die OM-toepassingsgebied beslaan 20 plase en beslaan 'n oppervlakte van ongeveer ~20 443 ha. Die PR- en OM-toepassingsgebied val binne die

Lephalale Plaaslike Munisipaliteit en Waterberg Distriksmunisipaliteit, Limpopo Provinsie. Die OM-aansoekgebied is ongeveer 14 km noordwes van Lephalale-dorp, 5 km noord van Marapong, en ongeveer 11 km noordwes van Onverwacht geleë. Die aangehegte liggingskaart bied 'n ruimtelike voorstelling van die projekomvang.

EIMS sal die prosedures volg wat in die OIB-regulasies omskryf word vir die onderneming van 'n Omvangsbepalings en Omgewingsimpakbepaling (OIB) proses. In ooreenstemming met Hoofstuk 6 van die OIB-regulasies en Artikel 41 van die NWA, sal 'n openbare deelnameproses onderneem word. U word hiermee uitgenooi om te registreer en kommentaar te lewer op die voorgestelde projek en aansoek/e. Neem asseblief kennis dat slegs geregistreerde B&GP'e ingelig sal word oor toekomstige projekinligting en geleenthede vir deelname.

Deur as 'n B&GP te registreer, stem U in tot die versameling en verwerking van U persoonlike inligting soos per die EIMS Privaatheidskennisgewing beskikbaar by www.eims.co.za/public-participation. Om te verhoed dat geleenthede vir publieke deelname misgeloop word, dien asseblief B&GP-registrasies, of enige navrae, kommentaar of bekommernisse met betrekking tot hierdie aansoek, so gou moontlik in by EIMS by:

Kontak Persoon: Mbali Tshabalala

EIMS Verwysingsnommer: 1590

Pos Adres: P.O. Box 2083; Pinetown; 2123

Telefoon: (011) 789 7170

Faks: (086) 571 9047

E-pos: LCBM@eims.co.za

Sluit asseblief die projek verwysingsnommer **1590** by alle korrespondensie in.

Kontak gerus die ondergetekende indien u enige navrae of bekommernisse het.

Groete,

EIMS Openbare Deelname Span

20 Hlakola 2026

Ref ya rena: 1590/lj/LW

Go yo e mo amago

Mohlomphegi goba Mohumagadi yo a Rategago:

TSEBIŠO MABAPI LE SEBAKA SA GO TŠEA KAROLO MO TSHEPETŠONG YA KGOPELO YA TUMELELO YA TIKOLOGO MO THULAGANYONG YA PROJEKE YA THUNGELA OPERATIONS (PTY) LTD COAL BED METHANE PRODUCTION, MMASEPALENG WA SELEGAE WA LEPHALLE, PROFENSENG YA LIMPOPO, AFRIKA BORWA.

Thungela Operations Proprietary Limited, karolo ya Thungela Resources Limited Group (pele e be e le Anglo), yeo ka morago e bitšwago Mokgopedi, e thwetše Ditirelo tša Taolo ya Kgahlamelo ya Tikologo (EIMS) bjalo ka Mošomi wa Tekolo ya Tikologo (EAP) go thuša ka go dira ditshepedišo tše di nyakegago tša kgopelo ya tikologo, go akaretšwa go kgoboketša dipego tše di nyakegago le go dira ditshepedišo tša ditherišano tša molao, go thekga projeke ye e šišintšwego bjalo ka ge e hlalošitšwe mo:

- Tumelelo ya go šomiša Tikologo (EA) go ya ka mediro ya NEMA (107 ya 1998)- Mediro ya Listing Notice (LN): LN2 Mediro: 20 le 20A. Lenaneo le le feletšego la mediro yeo e swanetšego go bontšhwa ka go Pego ya Bogolo.
- Laesense ya go thuntšhetša moya lefaufang go ya ka dinyakwa tša Molao wa Bosetšhaba wa Taolo ya Tikologo: Molao wa Boleng bja Moya- NEM: AQA (39 ya 2004)- Mediro e rulagantšwego: Karolwana ya 1.4 (Polokelo le Taolo ya Ditšweletšwa tša Petroleamo).
- Laesense ya Taolo ya Matlakala go ya ka dinyakwa tša Molao wa Bosetšhaba wa Taolo ya Tikologo: Molao wa Matlakala- NEM:WA (59 ya 2008) - Mešomo yeo e ngwadišitšwego: A1; A6; A7; A12; A14; B1; B10; B11; C1 le C2.
- Laesense ya Tirišo ya Meetse (WUL) go ya ka Molao wa Bosetšhaba wa Meetse – NWA (36 ya 1998) – Mešomo yeo e ngwadišitšwego: Karolo 21 tšhomišo ya meetse: 21a; 21b; 21c; 21e; 21f; 21g; 21i; le 21j.

Dinyakwa le mediro ye e nepagetšego ya molao wa tikologo di tla tiišetšwa nakong ya kgato ya go dira bogolo bja protšeke ye.

Mokgopedi o rometše kgopelo ya Tokelo ya Tšweletšo (PR) go Setheo sa Petroleum SA (PASA) sa coal bed methane (CBM) ka lefelong la Mmasepala wa Selegae wa Lephalale, Profenseng ya Limpopo, Afrika Borwa. Mediro ya go nyakišiša yeo e dirilwego go ya ka Tokelo ya go Nyakišiša (ER) e laeditše mothopo wa CBM wo o ka šomago le wo o ka ntšhwago. Ka lebaka leo Mokgopedi o dirile kgopelo go PASA ya PR ya go ntšha le go tšweletša (go šomiša) mothopo wa CBM.

Mokgopedi o ikemišeditše go ntšha mothopo wa CBM go tšwa lefelong la PR ka mokgwa wa dikgato. Ga bjale palomoka ya dikgato tše 3 tša tšweletšo di letetšwe go fihlelela tšweletšo ya tšhemo ye e tletšego ya kgopelo yeo e akaretšago palomoka ya bokagadimo bja dihekthara tše ka bago 134 155 (ha). Kgato ya mathomo ya tšweletšo e akaretša didiba tša tšweletšo tše 333 tšeo di tlogo kgokaganywa ka netiweke ya go kgoboketša khase ye e epetšwego ya diphaephe go ya lefelong la tshepedišo ya khase ye e lego bogareng. **Kgopelo ye e akaretša fela kgato ya mathomo ya tšweletšo gomme tumelelo ya tlaleletšo goba dilaesense di tla nyakega mo legatong la ka morago bakeng sa dikgato tše di šetšego tša tlhabollo ya lefelo la didiba ge tše di ka phegelelwa.**

Go tšweletša khase ka mo go swanetšego, go šišinywa go hlohleletša ga haeteroliki (go robega) ga dirokele tša malahla tšeo di nepištšwego. Tshepetšo ya gase e akaretša lefelo la go gatelela le go dira gore e be seela go dumelela tšweletšo ya setšweletšwa sa mafelelo, Gase ya Tlhago ye e nago le Seela (LNG), yeo e tlogo phatlalatšwa ka ntle ga lefelo ka dinamelwa tša tseleng. Tšweletšo e rulagantšwe go tšea nako ya mengwaga ye 30 go thoma go tloga letšatšikgwedi leo ditumelelo ka moka tša maleba le dilaesense di hweditšwego ka lona.

Lefelo la tirišo ya Tokelo ya Tšweletšo (PR) ka botlalo le akaretša dikarolo tša polasa tše 224 le palomoka ya lefelo la go ka ba 134 155 ha. Kgato ya mathomo (lefelo la tirišo ya EA) e tla akaretša lefelo le le nnyane ka gare ga lefelo le le

nabilego la PR gomme e tla ba taba ya EIA ye le kgopelo ya EA. Lefelo la tirišo ya EA le akaretša dipolasa tše 20 gomme le akaretša lefelo la go ka ba 20 443 ha. PR le lefelo la kgopelo ya EA di wela ka gare ga Mmasepala wa Selegae wa Lephallale le Mmasepala wa Selete sa Waterberg, Profenseng ya Limpopo. Lefelo la Kopo ya EA le mo e ka bago 14km ka leboabodikela bja toropo ya Lephallale, 5km ka leboa la Marapong, le mo e ka bago 11km ka leboabodikela bja Onverwacht. Mmapa wa selegae wo o kgomareditšwego o fa boemedi bja sebaka bja bogolo bja protšeke.

EIMS e tla latela tshepedišo yeo e hlalošitšwego ka go Melawana ya Tekolo ya Ditlamorago tša Tikologo (EIA) (GRN982 ya 2014, bjalo ka ge e fetotšwe) go dira tshepetšo ya Tekolo ya Ditlamorago tša Tikologo le Tikologo (EIA). Go ya ka Kgaolo bo seleta 6 ya Melawana ya EIA, tshepedišo ya go kgatha tema ga setšhaba e tla dirwa. O kgopelwa go ingwadiša le go fana ka maikutlo mabapi le projeke yeo e šišintšwego le/goba kgopelo yeo e šišintšwego. Go netefatša gore go hlaolwa le go ngwadišwa bjalo ka I&AP le gore ditshwaotshwao tša gago di swerwe, hle romela leina la gago, dintlha tša kgokagano, lebaka la kgahlego ya gago goba efe goba efe, ka go ngwala goba ka mogala, go EIMS. Ka kgopelo ela hloko gore ke I&AP fela yeo e ngwadišitšwego yeo e tlogo go tsebišwa ka ga tshedimošo ya projeke ya ka moso le dibaka tša go tšea karolo.

Ka go ingwadiša bjalo ka motho yo a nago le kgahlego le yo a amegago o dumela go kgoboketšwa le go šongwa ga tshedimošo ya gago ya motho ka noši go ya ka Tsebišo ya Lekunutu ya EIMS yeo e hwetšagalago go www.eims.co.za/public-participation. E le gore o se lahlegelwe ke dibaka tša go tšea karolo ga setšhaba hle romela direkoto tša I&AP, goba dipotšišo dife goba dife, ditshwaotshwao goba dipelaelo mabapi le kgopelo ye, ka pela ka mo go kgonegago go EIMS go:

Yo go ka ikgokaganywago le yena: Mbali Tshabalala.

Nomoro ya Referense ya EIMS: 1590

Aterese ya Poso: P.O. Box 2083; Pinegowrie; 2123

Mogala: (011) 789 7170

Fekse: (086) 571 9047

Imeile: LCBM@eims.co.za

Ka kgopelo tsenya nomoro ya referense ya projeke ya **1590** mangwalong ka moka.

Ka kgopelo ikwe o lokologile go ikgokaganya le yo a saennego ka mo tlase ge e ba o na le dipotšišo goba dipelaelo.

Ditumedišo tše Borutho,

Sehlopha sa go Kgatha Tema ga Setšhaba sa EIMS

Go ope yo e mo amang

Rre kgotsa Mme yo o Rategang:

KITSISO MABAPI LE TSHONO YA GO TSAA SEABE MO TSAMAISSONG YA KOPO YA LEFAPA LA TLHABOLOGO YA THUNGELA OPERATIONS (PTY) LTD COAL BED METHANE PRODUCTION PROJECT, TIKOLOGONG YA MMASEPALA WA LEPHALALE, POROFENSE YA LIMPOPO, AFRIKA-BORWA.

Thungela Operations Proprietary Limited, Leloko la Setlhophla sa Thungela Resources Limited (morago fano e kaiwang e le motsenyakopo) e tlhomile Environmental Impact Management Services (Pty) Ltd (EIMS) e leng Setsibi sa Tekolo ya Tikoloho (EAP) go thusa ka go dira thulaganyo ya tsa tetla (go akaretsa molao wa go tsaya karolo phatlalatsa), le go dira le go romela ditokumente tse di batlegang e le go thusa ka kopo ya:

- Tumello ya Tikoloho (EA) go ya ka Molao wa National Environmental Management Act - NEMA (107 wa 1998) - Ketsiso ya go tsenya mo lenaane la ditiro: LN2 Ditiragalo: 20 le 20A. Lenaane le le feletseng la ditiro tse di tshwanetseng go tlhagisiwa ditla tlhagiswa mo pegelong ya Tshekatsheko.
- Laesense ya go ntshetsa mowa laefaufaung go ya ka ditlhokego tsa National Environmental Management: Air Quality Act- NEM:AQA (39 ya 2004) - Tiro e e rulagantsweng: Karolo e nnye ya 1.4 (Poloko le tshomarelo ya dikumo tsa peterolo).
- Go ya ka ditlhokego tsa Laesense ya Tsamaiso ya Matlakala (Waste Management Licence) ya Molao wa Bosetšhaba wa Tsamaiso ya Tikologo: Molao wa Matlakala (National Environmental Management: Waste Act)- NEM:WA (59 wa 2008) - Ditiro tse di kwadilweng: A1; A6; A7; A12; A14; B1; B10; B11; C1 le C2.
- Laesense ya Tiriso ya Metsi (WUL) go ya ka Molao wa Bosetšhaba wa Metsi National Water Act NWA (36 ya 1998) - Ditiro tse di kwadilweng: Karolo 21, tiriso ya metsi: 21a; 21b; 21c; 21e; 21f; 21g; 21i; le 21j.

Ditlhabololo kgotsa ditiro tsa tlaleletso tse di kwadilweng di ka supiwana mo thulaganyong ya thulaganyo.

Mokopi o rometse kopo ya Tshwanelo ya Tlhagiso (PR) go Setheo sa Petroleum SA (PASA) sa coal bed methane (CBM) mo Masepaleng wa Selegae wa Lephalale, Porofense ya Limpopo, Aforika Borwa, e e neng ya amogelwa moragonyana. Ditiro tsa go batla tse di dirilweng go ya ka tshwanelo ya go batla (Exploration Right - ER) di bontshitse gore go na le motswedi wa CBM o o ka kgonang go dirisiwa le go ntshiwa. Ka jalo, Mokopi o dirile kopo kwa PASA ya PR go ntsha le go tlhagisa (tiriso) motswedi wa CBM.

Mokopi o ikaeletse go ntsha motswedi wa CBM go tswa mo kgaolong ya PR ka kgato ka kgato. Ga jaana palogotlhe ya dikgato tsa tlhagiso di le 3 di solofetswe go fitlhelela tlhagiso e e tletseng ya tshimo e e akaretsang palogotlhe ya diheketara tse di ka nnang 134 155 (ha). Kgato ya ntlha ya tlhagiso e na le didiba tsa tlhagiso di le 333 tse di tla golaganngwang ka netweke e e fitlhlilweng ya dipeipi go ya kwa lefelong la go baakanya gase. **Kopo e akaretsa fela kgato ya ntlha ya tlhagiso mme tetla ya tlaleletso kgotsa laesense e tla tlhokega mo kगतong e e latelang ya dikgato tse di setseng tsa tlhabololo ya tshimo ya didiba fa di ka latelwa.**

Go ntsha gase ka tsela e e siameng, go akantshiwa gore go dirisiwe hydraulic stimulation a magala mo mafelong a a tshwanetseng go ntshiwa gase. Thulaganyo ya gase e akaretsa setheo sa kgatelelo le go gakolola go letla tlhagiso ya setlhagiswa sa bofelo, Liquefied Natural Gas (LNG), se se tla anamisiwang kwa ntle ga setsha ka dipalangwa tsa tsela. Tlhagiso e rulagantswe go tsaya paka ya dingwaga di le 30 go simolola ka letlha le dithebolo tsotlhe tse di maleba le dilaesense di amogetsweng ka lone.

Lefelo le le feletseng la kopo ya PR le akaretsa dikarolo tsa polase di le 224 le palogotlhe ya diheketara di ka nna 134 155. Kgato ya ntlha (lefelola kopo ya EA) e tla akaretsa kgaolo e nnye mo kgaolong e e atolositsweng ya PR mme e tla nna

setlhogo sa EIA eno le kopo ya EA. Lefelo la kopo la EA le akaretsa dipolase di le 20 mme le akaretsa kgaolo e e ka nnang ~20 443 ha. Lefelo la kopo la PR le EA le wela mo gare ga Masepala wa Selegae wa Lephalale le Masepala wa Setereke sa Waterberg, Porofense ya Limpopo. Lefelo la kopo la EA le ka nna 14km go ya bokone-bophirima jwa toropo ya Lephalale, 5km kwa bokone jwa Marapong, le 11km bokone bophirima jwa Onverwacht. Mmepe wa lefelo o o tlaleleditsweng o neelana ka kemedi ya bogolo jwa porojeke.

EIMS e tla latela dithulaganyo tse di tshalositsweng mo melawaneng ya EIA go dira thulaganyo ya Tlhatlhobo ya thekolo ya tshebetso le Ya Tikologo (EIA). Re go laletsa go tsenya kopo ya go tliša megopolo le dikakanyo kaga projeke e eleng taletsong. Tsweetswee ela tlhoko gore ke fela di I&AP tse di kwadisitsweng tse di tliša itsisiweng kaga tshedimosetso ya porojeke ya mo isagweng le ditshono tsa go tsaya karolo.

Ka go ikwadisa o le motho yo o nang le kgatlhego mo go seno e bile se go ama o dumela gore go tsewe le go rulaganya tshedimosetso ya gago ya botho go ya ka Kitsiso ya Poraefete ya EIMS e e gone go www.eims.co.za/public-participation/. Go tliša go fetwa ke ditshono tsa go tsaya karolo ga bathobotlhe ka kopa tsenya dboikwadiso tsa I&AP, dipotso dipe, dikakgelo, kgotsa matshwenyego mabapi le kopo eno, ka bonako jo bo kgonegang:

Leina le Tshedimosetso ya go ikgolaganya ya Mogakolodi: Mbali Tshabalala.

Nomoro ya Referense ya EIMS: 1590

Aterese ya Poso: P.O. Box 2083; Pinegowrie; 2123

Mogala: (011) 789 7170

Fekse: (086) 571 9047

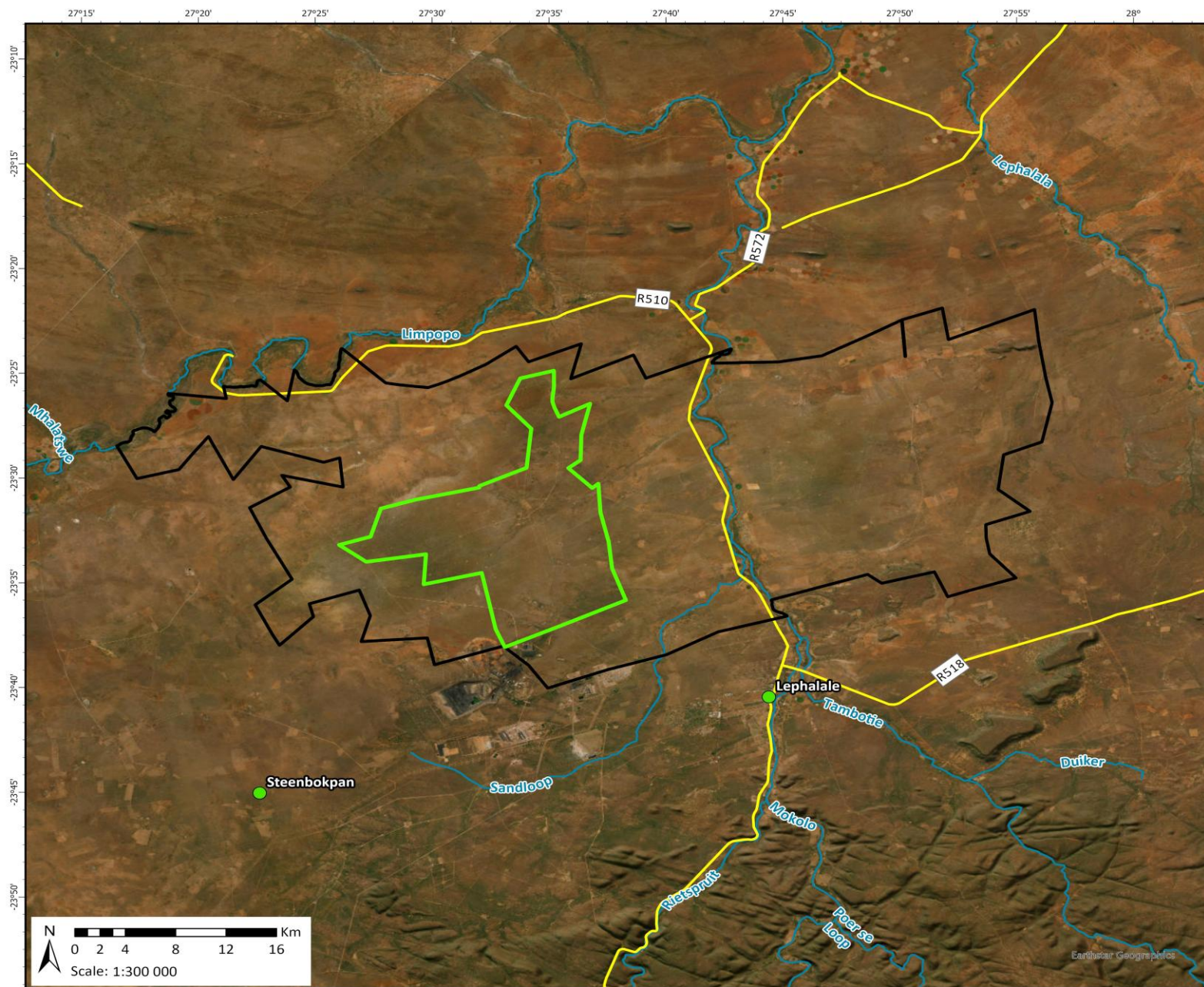
Imeili: LCBM@eims.co.za

Tsweetswee akaretsa nomoro ya tshupiso ya porojeke **1590** mo makwalong otlhe ao lo re kwalelang one.

Tsweetswee utlwa o gololesegile go ikgolaganya le yo o saenneng fa tlase fano fa o na le potso epe kgotsa matshwenyego.

Madume,

Sehlopha sa ho nka karolo ha sechaba sa EIMS



Locality Map

1590 Thungela Lephalale CBM EIA

Legend

- Production Right Application Boundary
- Environmental Authorisation Application Boundary
- Rivers
- Main Roads
- Places

Data Sources:
 CSG; ESRI
 Coord System: GCS WGS 1984
 Datum: WGS 1984
 Units: Degree
 Ref: 1590_Locality

Date: 2026/02/17
 EIMS Ref: 1590
 Compiled: JW
 Reviewed: LW
 Approved: LW



Mbali Tshabalala

From: 1590 Lephalale CBM Project <lcbm@eims.co.za>
Sent: Friday, 20 March 2026 13:42
Subject: Notification: Opportunity to participate in the Proposed Thungela Operations (Pty) Ltd Coal Bed Methane Production Project
Attachments: 1590_CTR_Letter_Final.pdf

Dear Interested and Affected Party,

This email serves to notify you of the opportunity to participate in the Environmental Authorisation application process for the proposed Thungela Operations (Pty) Ltd Coal Bed Methane Production project in the Lephalale Local Municipality, Limpopo Province, South Africa. For more information, please refer to the attached document.

Please do not hesitate to contact us should you have any queries and/or concerns.

Geachte Geregistreerde Belanghebbende en Geaffekteerde Party,

Hierdie e-pos dien om jou in kennis te stel van die geleentheid om deel te neem aan Omgewingsmagtigingsproses vir die Voorgestelde Thungela Bedrywighede (Edms) Bpk Steenkoolbedmetaanproduksieprojek in die Lephalale Plaaslike Munisipaliteit, Limpopo Provinsie, Suid-Afrika. Vir meer inligting, verwys asseblief na die aangehegte dokument.

Moet asseblief nie huiwer om ons te kontak indien jy enige vrae en/of bekommernisse het nie.

Motlotlegi yo o amegang le yo o amegang,

Imeile eno e go itsise ka tshono ya go nna le seabe mo thulaganyong ya go dira kopo ya tetla ya tikologo ya porojeke e e tshitshinngwang ya Thungela Operations (Pty) Ltd Coal Bed Methane Production kwa mmasepaleng wa Lephalale, kwa porofenseng ya Limpopo, mo Aforika Borwa. Go bona tshedimosetso e e oketsegileng, tsweetswee leba lekwalo le le mametleletsweng.

Tsweetswee o se ka wa okaoka go ikgolaganya le rona fa o ka nna le dipotso le/kgotsa matshwenyego.

Mohlomphegi o na le Kgahlego le o Amegang,

Imeile ye e šoma go go tsebiša ka ga sebaka sa go kgatha tema ka tshepedišong ya kgopelo ya tumelelo ya tikologo ya protšeke ye e šišintšwego ya Thungela Operations (Pty) Ltd Coal Bed Methane ka Masepaleng wa Selegae wa Lephalale, Profenseng ya Limpopo, Afrika Borwa. Ge o nyaka tshedimošo ka botlalo, hle etela tokumente ye e lego ka tlase.

O se dikadike go ikgokaganya le rena ge o na le dipotšišo goba dipelaelo.

Kind regards,
EIMS Public Participation Team



ENVIRONMENTAL
IMPACT
MANAGEMENT
SERVICES

T +27 11 789 7170
F +27 86 571 9047
E lcbm@eims.co.za
W www.eims.co.za

8 Dalmeny Road, Pine Park,
Randburg, 2194

PO Box 2083, Pinegowrie, 2123, ZA

This e-mail and any attachment(s) thereto is intended solely for the confidential use of the intended recipient(s) and for the specific purpose(s) that it was intended. Unauthorised review, dissemination, distribution or copying of that e-mail is strictly prohibited. If you suspect that you may have received the mail in error, please desist from reading it, notify the sender immediately of the error, and return and/or destroy the original message.

TO: FROM: EIMS Public Participation Team

DEPARTMENT: Ministry of Land Management, Water and REF: 1590
Sanitation Services

COMPANY: Botswana National Authority DATE: 20 March 2026

FAX: PAGES: 10

RE: Notification: Opportunity to participate in the Proposed Thungela Operations (Pty) Ltd Coal Bed Methane Production Project

Dear Interested and Affected Party,

This email serves to notify you of the opportunity to participate in the Environmental Authorisation application process for the proposed Thungela Operations (Pty) Ltd Coal Bed Methane Production project in the Lephalale Local Municipality, Limpopo Province, South Africa. For more information, please refer to the attached document.

Please do not hesitate to contact us should you have any queries and/or concerns.

Geagte Geregistreerde Belanghebbende en Geaffekteerde Party,

Hierdie e-pos dien om jou in kennis te stel van die geleentheid om deel te neem aan Omgewingsmagtigingsproses vir die Voorgestelde Thungela Bedrywighede (Edms) Bpk Steenkoolbedmetaanproduksieprojek in die Lephalale Plaaslike Munisipaliteit, Limpopo Provinsie, Suid-Afrika. Vir meer inligting, verwys asseblief na die aangehegte dokument.

Moet asseblief nie huiwer om ons te kontak indien jy enige vrae en/of bekommernisse het nie.

Motlotlegi yo o amegang le yo o amegang,

Imeile eno e go itsise ka tshono ya go nna le seabe mo thulaganyong ya go dira kopo ya tetla ya tikologo ya porojeke e e tshitshinngwang ya Thungela Operations (Pty) Ltd Coal Bed Methane Production kwa mmasepaleng wa Lephalale , kwa porofenseng ya Limpopo, mo Aforika Borwa. Go bona tshedimosetso e e oketsegileng, tsweetswee leba lekwalo le le mametleletsweng.

Tsweetswee o se ka wa okaoka go ikgolaganya le rona fa o ka nna le dipotso le/kgotsa matshwenyego.

Mohlomphegi o na le Kgahlego le o Amegang ,

Imeile ye e šoma go go tsebiša ka ga sebaka sa go kgatha tema ka tshepedišong ya kgopelo ya tumelelo ya tikologo ya protšeke ye e šišintšwego ya Thungela Operations (Pty) Ltd Coal Bed Methane ka Masepaleng wa Selegae wa Lephalale, Profenseng ya Limpopo, Afrika Borwa. Ge o nyaka tshedimošo ka botlalo, hle etela tokumente ye e lego ka tlase.

O se dikadike go ikgolaganya le rena ge o na le dipotšišo goba dipelaelo.

Regards,

EIMS Public Participation Team

TO: FROM: EIMS Public Participation Team

DEPARTMENT: Ministry of Land Management, Water and REF: 1590
Sanitation Services

COMPANY: Botswana National Authority DATE: 20 March 2026

FAX: PAGES: 10

RE: Notification: Opportunity to participate in the Proposed Thungela Operations (Pty) Ltd Coal Bed Methane Production Project

Dear Interested and Affected Party,

This email serves to notify you of the opportunity to participate in the Environmental Authorisation application process for the proposed Thungela Operations (Pty) Ltd Coal Bed Methane Production project in the Lephalale Local Municipality, Limpopo Province, South Africa. For more information, please refer to the attached document.

Please do not hesitate to contact us should you have any queries and/or concerns.

Geagte Geregistreerde Belanghebbende en Geaffekteerde Party,

Hierdie e-pos dien om jou in kennis te stel van die geleentheid om deel te neem aan Omgewingsmagtigingsproses vir die Voorgestelde Thungela Bedrywighede (Edms) Bpk Steenkoolbedmetaanproduksieprojek in die Lephalale Plaaslike Munisipaliteit, Limpopo Provinsie, Suid-Afrika. Vir meer inligting, verwys asseblief na die aangehegte dokument.

Moet asseblief nie huiwer om ons te kontak indien jy enige vrae en/of bekommernisse het nie.

Motlotlegi yo o amegang le yo o amegang,

Imeile eno e go itsise ka tshono ya go nna le seabe mo thulaganyong ya go dira kopo ya tetla ya tikologo ya porojeke e e tshitshinngwang ya Thungela Operations (Pty) Ltd Coal Bed Methane Production kwa mmasepaleng wa Lephalale , kwa porofenseng ya Limpopo, mo Aforika Borwa. Go bona tshedimosetso e e oketsegileng, tsweetswee leba lekwalo le le mametleletsweng.

Tsweetswee o se ka wa okaoka go ikgolaganya le rona fa o ka nna le dipotso le/kgotsa matshwenyego.

Mohlomphegi o na le Kgahlego le o Amegang ,

Imeile ye e šoma go go tsebiša ka ga sebaka sa go kgatha tema ka tshepedišong ya kgopelo ya tumelelo ya tikologo ya protšeke ye e šišintšwego ya Thungela Operations (Pty) Ltd Coal Bed Methane ka Masepaleng wa Selegae wa Lephalale, Profenseng ya Limpopo, Afrika Borwa. Ge o nyaka tshedimošo ka botlalo, hle etela tokumente ye e lego ka tlase.

O se dikadike go ikgolaganya le rena ge o na le dipotšišo goba dipelaelo.

Regards,

EIMS Public Participation Team

TO: FROM: EIMS Public Participation Team

DEPARTMENT: Ministry of Infrastructure and Housing REF: 1590
Development

COMPANY: Botswana National Authority DATE: 20 March 2026

FAX: PAGES: 10

RE: Notification: Opportunity to participate in the Proposed Thungela Operations (Pty) Ltd Coal Bed Methane Production Project

Dear Interested and Affected Party,

This email serves to notify you of the opportunity to participate in the Environmental Authorisation application process for the proposed Thungela Operations (Pty) Ltd Coal Bed Methane Production project in the Lephalale Local Municipality, Limpopo Province, South Africa. For more information, please refer to the attached document.

Please do not hesitate to contact us should you have any queries and/or concerns.

Geagte Geregistreerde Belanghebbende en Geaffekteerde Party,

Hierdie e-pos dien om jou in kennis te stel van die geleentheid om deel te neem aan Omgewingsmagtigingsproses vir die Voorgestelde Thungela Bedrywighede (Edms) Bpk Steenkoolbedmetaanproduksieprojek in die Lephalale Plaaslike Munisipaliteit, Limpopo Provinsie, Suid-Afrika. Vir meer inligting, verwys asseblief na die aangehegte dokument.

Moet asseblief nie huiwer om ons te kontak indien jy enige vrae en/of bekommernisse het nie.

Motlotlegi yo o amegang le yo o amegang,

Imeile eno e go itsise ka tshono ya go nna le seabe mo thulaganyong ya go dira kopo ya tetla ya tikologo ya porojeke e e tshitshinngwang ya Thungela Operations (Pty) Ltd Coal Bed Methane Production kwa mmasepaleng wa Lephalale , kwa porofenseng ya Limpopo, mo Aforika Borwa. Go bona tshedimosetso e e oketsegileng, tsweetswee leba lekwalo le le mametleletsweng.

Tsweetswee o se ka wa okaoka go ikgolaganya le rona fa o ka nna le dipotso le/kgotsa matshwenyego.

Mohlomphegi o na le Kgahlego le o Amegang ,

Imeile ye e šoma go go tsebiša ka ga sebaka sa go kgatha tema ka tshepedišong ya kgopelo ya tumelelo ya tikologo ya protšeke ye e šišintšwego ya Thungela Operations (Pty) Ltd Coal Bed Methane ka Masepaleng wa Selegae wa Lephalale, Profenseng ya Limpopo, Afrika Borwa. Ge o nyaka tshedimošo ka botlalo, hle etela tokumente ye e lego ka tlase.

O se dikadike go ikgolaganya le rena ge o na le dipotšišo goba dipelaelo.

Regards,

EIMS Public Participation Team

TO: FROM: EIMS Public Participation Team

DEPARTMENT: Ministry of Mineral Resources, Green REF: 1590
Technology and Energy Security

COMPANY: Botswana National Authority DATE: 20 March 2026

FAX: PAGES: 10

RE: Notification: Opportunity to participate in the Proposed Thungela Operations (Pty) Ltd Coal Bed Methane Production Project

Dear Interested and Affected Party,

This email serves to notify you of the opportunity to participate in the Environmental Authorisation application process for the proposed Thungela Operations (Pty) Ltd Coal Bed Methane Production project in the Lephalale Local Municipality, Limpopo Province, South Africa. For more information, please refer to the attached document.

Please do not hesitate to contact us should you have any queries and/or concerns.

Geagte Geregistreerde Belanghebbende en Geaffekteerde Party,

Hierdie e-pos dien om jou in kennis te stel van die geleentheid om deel te neem aan Omgewingsmagtigingsproses vir die Voorgestelde Thungela Bedrywighede (Edms) Bpk Steenkoolbedmetaanproduksieprojek in die Lephalale Plaaslike Munisipaliteit, Limpopo Provinsie, Suid-Afrika. Vir meer inligting, verwys asseblief na die aangehegte dokument.

Moet asseblief nie huiwer om ons te kontak indien jy enige vrae en/of bekommernisse het nie.

Motlotlegi yo o amegang le yo o amegang,

Imeile eno e go itsise ka tshono ya go nna le seabe mo thulaganyong ya go dira kopo ya tetla ya tikologo ya porojeke e e tshitshinngwang ya Thungela Operations (Pty) Ltd Coal Bed Methane Production kwa mmasepaleng wa Lephalale , kwa porofenseng ya Limpopo, mo Aforika Borwa. Go bona tshedimosetso e e oketsegileng, tsweetswee leba lekwalo le le mametleletsweng.

Tsweetswee o se ka wa okaoka go ikgolaganya le rona fa o ka nna le dipotso le/kgotsa matshwenyego.

Mohlomphegi o na le Kgahlego le o Amegang ,

Imeile ye e šoma go go tsebiša ka ga sebaka sa go kgatha tema ka tshepedišong ya kgopelo ya tumelelo ya tikologo ya protšeke ye e šišintšwego ya Thungela Operations (Pty) Ltd Coal Bed Methane ka Masepaleng wa Selegae wa Lephalale, Profenseng ya Limpopo, Afrika Borwa. Ge o nyaka tshedimošo ka botlalo, hle etela tokumente ye e lego ka tlase.

O se dikadike go ikgokaganya le rena ge o na le dipotšišo goba dipelaelo.

Regards,

EIMS Public Participation Team

TO:	Mosa Mabuza	FROM:	EIMS Public Participation Team
DEPARTMENT:	CEO	REF:	1590
COMPANY:	Council of Geosciences	DATE:	20 March 2026
FAX:		PAGES:	10
RE:	Notification: Opportunity to participate in the Proposed Thungela Operations (Pty) Ltd Coal Bed Methane Production Project		

Dear Interested and Affected Party,

This email serves to notify you of the opportunity to participate in the Environmental Authorisation application process for the proposed Thungela Operations (Pty) Ltd Coal Bed Methane Production project in the Lephalale Local Municipality, Limpopo Province, South Africa. For more information, please refer to the attached document.

Please do not hesitate to contact us should you have any queries and/or concerns.

Geagte Geregistreerde Belanghebbende en Geaffekteerde Party,

Hierdie e-pos dien om jou in kennis te stel van die geleentheid om deel te neem aan Omgewingsmagtigingsproses vir die Voorgestelde Thungela Bedrywighede (Edms) Bpk Steenkoolbedmetaanproduksieprojek in die Lephalale Plaaslike Munisipaliteit, Limpopo Provinsie, Suid-Afrika. Vir meer inligting, verwys asseblief na die aangehegte dokument.

Moet asseblief nie huiwer om ons te kontak indien jy enige vrae en/of bekommernisse het nie.

Motlotlegi yo o amegang le yo o amegang,

Imeile eno e go itsise ka tshono ya go nna le seabe mo thulaganyong ya go dira kopo ya tetla ya tikologo ya porojeke e e tshitshinngwang ya Thungela Operations (Pty) Ltd Coal Bed Methane Production kwa mmasepaleng wa Lephalale , kwa porofenseng ya Limpopo, mo Aforika Borwa. Go bona tshedimosetso e e oketsegileng, tsweetswee leba lekwalo le le mametleletsweng.

Tsweetswee o se ka wa okaoka go ikgolaganya le rona fa o ka nna le dipotso le/kgotsa matshwenyego.

Mohlomphegi o na le Kgahlego le o Amegang ,

Imeile ye e šoma go go tsebiša ka ga sebaka sa go kgatha tema ka tshepedišong ya kgopelo ya tumelelo ya tikologo ya protšeke ye e šišintšwego ya Thungela Operations (Pty) Ltd Coal Bed Methane ka Masepaleng wa Selegae wa Lephalale, Profenseng ya Limpopo, Afrika Borwa. Ge o nyaka tshedimošo ka botlalo, hle etela tokumente ye e lego ka tlase.

O se dikadike go ikgokaganya le rena ge o na le dipotšišo goba dipelaelo.

Regards,

EIMS Public Participation Team

TO: Maggy Kgwantha FROM: EIMS Public Participation Team

DEPARTMENT: Executive manager: office of the Mayor REF: 1590

COMPANY: Lephalale Local Municipality DATE: 20 March 2026

FAX: PAGES: 10

RE: Notification: Opportunity to participate in the Proposed Thungela Operations (Pty) Ltd Coal Bed Methane Production Project

Dear Interested and Affected Party,

This email serves to notify you of the opportunity to participate in the Environmental Authorisation application process for the proposed Thungela Operations (Pty) Ltd Coal Bed Methane Production project in the Lephalale Local Municipality, Limpopo Province, South Africa. For more information, please refer to the attached document.

Please do not hesitate to contact us should you have any queries and/or concerns.

Geagte Geregistreerde Belanghebbende en Geaffekteerde Party,

Hierdie e-pos dien om jou in kennis te stel van die geleentheid om deel te neem aan Omgewingsmagtigingsproses vir die Voorgestelde Thungela Bedrywighede (Edms) Bpk Steenkoolbedmetaanproduksieprojek in die Lephalale Plaaslike Munisipaliteit, Limpopo Provinsie, Suid-Afrika. Vir meer inligting, verwys asseblief na die aangehegte dokument.

Moet asseblief nie huiwer om ons te kontak indien jy enige vrae en/of bekommernisse het nie.

Motlotlegi yo o amegang le yo o amegang,

Imeile eno e go itsise ka tshono ya go nna le seabe mo thulaganyong ya go dira kopo ya tetla ya tikologo ya porojeke e e tshitshinngwang ya Thungela Operations (Pty) Ltd Coal Bed Methane Production kwa mmasepaleng wa Lephalale , kwa porofenseng ya Limpopo, mo Aforika Borwa. Go bona tshedimosetso e e oketsegileng, tsweetswee leba lekwalo le le mametleletsweng.

Tsweetswee o se ka wa okaoka go ikgolaganya le rona fa o ka nna le dipotso le/kgotsa matshwenyego.

Mohlomphegi o na le Kgahlego le o Amegang ,

Imeile ye e šoma go go tsebiša ka ga sebaka sa go kgatha tema ka tshepedišong ya kgopelo ya tumelelo ya tikologo ya protšeke ye e šišintšwego ya Thungela Operations (Pty) Ltd Coal Bed Methane ka Masepaleng wa Selegae wa Lephalale, Profenseng ya Limpopo, Afrika Borwa. Ge o nyaka tshedimošo ka botlalo, hle etela tokumente ye e lego ka tlase.

O se dikadike go ikgokaganya le rena ge o na le dipotšišo goba dipelaelo.

Regards,

EIMS Public Participation Team

TO: Maggy Kgwantha FROM: EIMS Public Participation Team

DEPARTMENT: Executive manager: office of the Mayor REF: 1590

COMPANY: Lephalale Local Municipality DATE: 20 March 2026

FAX: PAGES: 10

RE: Notification: Opportunity to participate in the Proposed Thungela Operations (Pty) Ltd Coal Bed Methane Production Project

Dear Interested and Affected Party,

This email serves to notify you of the opportunity to participate in the Environmental Authorisation application process for the proposed Thungela Operations (Pty) Ltd Coal Bed Methane Production project in the Lephalale Local Municipality, Limpopo Province, South Africa. For more information, please refer to the attached document.

Please do not hesitate to contact us should you have any queries and/or concerns.

Geagte Geregistreerde Belanghebbende en Geaffekteerde Party,

Hierdie e-pos dien om jou in kennis te stel van die geleentheid om deel te neem aan Omgewingsmagtigingsproses vir die Voorgestelde Thungela Bedrywighede (Edms) Bpk Steenkoolbedmetaanproduksieprojek in die Lephalale Plaaslike Munisipaliteit, Limpopo Provinsie, Suid-Afrika. Vir meer inligting, verwys asseblief na die aangehegte dokument.

Moet asseblief nie huiwer om ons te kontak indien jy enige vrae en/of bekommernisse het nie.

Motlotlegi yo o amegang le yo o amegang,

Imeile eno e go itsise ka tshono ya go nna le seabe mo thulaganyong ya go dira kopo ya tetla ya tikologo ya porojeke e e tshitshinngwang ya Thungela Operations (Pty) Ltd Coal Bed Methane Production kwa mmasepaleng wa Lephalale , kwa porofenseng ya Limpopo, mo Aforika Borwa. Go bona tshedimosetso e e oketsegileng, tsweetswee leba lekwalo le le mametleletsweng.

Tsweetswee o se ka wa okaoka go ikgolaganya le rona fa o ka nna le dipotso le/kgotsa matshwenyego.

Mohlomphegi o na le Kgahlego le o Amegang ,

Imeile ye e šoma go go tsebiša ka ga sebaka sa go kgatha tema ka tshepedišong ya kgopelo ya tumelelo ya tikologo ya protšeke ye e šišintšwego ya Thungela Operations (Pty) Ltd Coal Bed Methane ka Masepaleng wa Selegae wa Lephalale, Profenseng ya Limpopo, Afrika Borwa. Ge o nyaka tshedimošo ka botlalo, hle etela tokumente ye e lego ka tlase.

O se dikadike go ikgokaganya le rena ge o na le dipotšišo goba dipelaelo.

Regards,

EIMS Public Participation Team

TO:	FROM: EIMS Public Participation Team
DEPARTMENT	REF: 1590
COMPANY: Hoerskool Ellisras	DATE: 20 March 2026
FAX:	PAGES: 10
RE:	Notification: Opportunity to participate in the Proposed Thungela Operations (Pty) Ltd Coal Bed Methane Production Project

Dear Interested and Affected Party,

This email serves to notify you of the opportunity to participate in the Environmental Authorisation application process for the proposed Thungela Operations (Pty) Ltd Coal Bed Methane Production project in the Lephalale Local Municipality, Limpopo Province, South Africa. For more information, please refer to the attached document.

Please do not hesitate to contact us should you have any queries and/or concerns.

Geagte Geregistreerde Belanghebbende en Geaffekteerde Party,

Hierdie e-pos dien om jou in kennis te stel van die geleentheid om deel te neem aan Omgewingsmagtigingsproses vir die Voorgestelde Thungela Bedrywighede (Edms) Bpk Steenkoolbedmetaanproduksieprojek in die Lephalale Plaaslike Munisipaliteit, Limpopo Provinsie, Suid-Afrika. Vir meer inligting, verwys asseblief na die aangehegte dokument.

Moet asseblief nie huiwer om ons te kontak indien jy enige vrae en/of bekommernisse het nie.

Motlotlegi yo o amegang le yo o amegang,

Imeile eno e go itsise ka tshono ya go nna le seabe mo thulaganyong ya go dira kopo ya tetla ya tikologo ya porojeke e e tshitshinngwang ya Thungela Operations (Pty) Ltd Coal Bed Methane Production kwa mmasepaleng wa Lephalale , kwa porofenseng ya Limpopo, mo Aforika Borwa. Go bona tshedimosetso e e oketsegileng, tsweetswee leba lekwalo le le mametleletsweng.

Tsweetswee o se ka wa okaoka go ikgolaganya le rona fa o ka nna le dipotso le/kgotsa matshwenyego.

Mohlomphegi o na le Kgahlego le o Amegang ,

Imeile ye e šoma go go tsebiša ka ga sebaka sa go kgatha tema ka tshepedišong ya kgopelo ya tumelelo ya tikologo ya protšeke ye e šišintšwego ya Thungela Operations (Pty) Ltd Coal Bed Methane ka Masepaleng wa Selegae wa Lephalale, Profenseng ya Limpopo, Afrika Borwa. Ge o nyaka tshedimošo ka botlalo, hle etela tokumente ye e lego ka tlase.

O se dikadike go ikgokaganya le rena ge o na le dipotšišo goba dipelaelo.

Regards,

EIMS Public Participation Team

TO:	FROM: EIMS Public Participation Team
DEPARTMENT	REF: 1590
COMPANY: Waterberg District Municipality	DATE: 20 March 2026
FAX:	PAGES: 10
RE:	Notification: Opportunity to participate in the Proposed Thungela Operations (Pty) Ltd Coal Bed Methane Production Project

Dear Interested and Affected Party,

This email serves to notify you of the opportunity to participate in the Environmental Authorisation application process for the proposed Thungela Operations (Pty) Ltd Coal Bed Methane Production project in the Lephalale Local Municipality, Limpopo Province, South Africa. For more information, please refer to the attached document.

Please do not hesitate to contact us should you have any queries and/or concerns.

Geagte Geregistreerde Belanghebbende en Geaffekteerde Party,

Hierdie e-pos dien om jou in kennis te stel van die geleentheid om deel te neem aan Omgewingsmagtigingsproses vir die Voorgestelde Thungela Bedrywighede (Edms) Bpk Steenkoolbedmetaanproduksieprojek in die Lephalale Plaaslike Munisipaliteit, Limpopo Provinsie, Suid-Afrika. Vir meer inligting, verwys asseblief na die aangehegte dokument.

Moet asseblief nie huiwer om ons te kontak indien jy enige vrae en/of bekommernisse het nie.

Motlotlegi yo o amegang le yo o amegang,

Imeile eno e go itsise ka tshono ya go nna le seabe mo thulaganyong ya go dira kopo ya tetla ya tikologo ya porojeke e e tshitshinngwang ya Thungela Operations (Pty) Ltd Coal Bed Methane Production kwa mmasepaleng wa Lephalale , kwa porofenseng ya Limpopo, mo Aforika Borwa. Go bona tshedimosetso e e oketsegileng, tsweetswee leba lekwalo le le mametleletsweng.

Tsweetswee o se ka wa okaoka go ikgolaganya le rona fa o ka nna le dipotso le/kgotsa matshwenyego.

Mohlomphegi o na le Kgahlego le o Amegang ,

Imeile ye e šoma go go tsebiša ka ga sebaka sa go kgatha tema ka tshepedišong ya kgopelo ya tumelelo ya tikologo ya protšeke ye e šišintšwego ya Thungela Operations (Pty) Ltd Coal Bed Methane ka Masepaleng wa Selegae wa Lephalale, Profenseng ya Limpopo, Afrika Borwa. Ge o nyaka tshedimošo ka botlalo, hle etela tokumente ye e lego ka tlase.

O se dikadike go ikgokaganya le rena ge o na le dipotšišo goba dipelaelo.

Regards,

EIMS Public Participation Team

TO: Charles Hlebela FROM: EIMS Public Participation Team

DEPARTMENT: Head of Communications REF: 1590

COMPANY: National Energy Regulator of South Africa DATE: 20 March 2026
(NERSA)

FAX: PAGES: 10

RE: Notification: Opportunity to participate in the Proposed Thungela Operations (Pty) Ltd Coal Bed Methane Production Project

Dear Interested and Affected Party,

This email serves to notify you of the opportunity to participate in the Environmental Authorisation application process for the proposed Thungela Operations (Pty) Ltd Coal Bed Methane Production project in the Lephalale Local Municipality, Limpopo Province, South Africa. For more information, please refer to the attached document.

Please do not hesitate to contact us should you have any queries and/or concerns.

Geagte Geregistreerde Belanghebbende en Geaffekteerde Party,

Hierdie e-pos dien om jou in kennis te stel van die geleentheid om deel te neem aan Omgewingsmagtigingsproses vir die Voorgestelde Thungela Bedrywighede (Edms) Bpk Steenkoolbedmetaanproduksieprojek in die Lephalale Plaaslike Munisipaliteit, Limpopo Provinsie, Suid-Afrika. Vir meer inligting, verwys asseblief na die aangehegte dokument.

Moet asseblief nie huiwer om ons te kontak indien jy enige vrae en/of bekommernisse het nie.

Motlotlegi yo o amegang le yo o amegang,

Imeile eno e go itsise ka tshono ya go nna le seabe mo thulaganyong ya go dira kopo ya tetla ya tikologo ya porojeke e e tshitshinngwang ya Thungela Operations (Pty) Ltd Coal Bed Methane Production kwa mmasepaleng wa Lephalale , kwa porofenseng ya Limpopo, mo Aforika Borwa. Go bona tshedimosetso e e oketsegileng, tsweetswee leba lekwalo le le mametleletsweng.

Tsweetswee o se ka wa okaoka go ikgolaganya le rona fa o ka nna le dipotso le/kgotsa matshwenyego.

Mohlomphegi o na le Kgahlego le o Amegang ,

Imeile ye e šoma go go tsebiša ka ga sebaka sa go kgatha tema ka tshepedišong ya kgopelo ya tumelelo ya tikologo ya protšeke ye e šišintšwego ya Thungela Operations (Pty) Ltd Coal Bed Methane ka Masepaleng wa Selegae wa Lephalale, Profenseng ya Limpopo, Afrika Borwa. Ge o nyaka tshedimošo ka botlalo, hle etela tokumente ye e lego ka tlase.

O se dikadike go ikgolaganya le rena ge o na le dipotšišo goba dipelaelo.

Regards,

EIMS Public Participation Team

TO:	Edith Tukakgomo	FROM:	EIMS Public Participation Team
DEPARTMENT:	Municipal Manager	REF:	1590
COMPANY:	Lephalale Local Municipality	DATE:	20 March 2026
FAX:		PAGES:	10
RE:	Notification: Opportunity to participate in the Proposed Thungela Operations (Pty) Ltd Coal Bed Methane Production Project		

Dear Interested and Affected Party,

This email serves to notify you of the opportunity to participate in the Environmental Authorisation application process for the proposed Thungela Operations (Pty) Ltd Coal Bed Methane Production project in the Lephalale Local Municipality, Limpopo Province, South Africa. For more information, please refer to the attached document.

Please do not hesitate to contact us should you have any queries and/or concerns.

Geagte Geregistreerde Belanghebbende en Geaffekteerde Party,

Hierdie e-pos dien om jou in kennis te stel van die geleentheid om deel te neem aan Omgewingsmagtigingsproses vir die Voorgestelde Thungela Bedrywighede (Edms) Bpk Steenkoolbedmetaanproduksieprojek in die Lephalale Plaaslike Munisipaliteit, Limpopo Provinsie, Suid-Afrika. Vir meer inligting, verwys asseblief na die aangehegte dokument.

Moet asseblief nie huiwer om ons te kontak indien jy enige vrae en/of bekommernisse het nie.

Motlotlegi yo o amegang le yo o amegang,

Imeile eno e go itsise ka tshono ya go nna le seabe mo thulaganyong ya go dira kopo ya tetla ya tikologo ya porojeke e e tshitshinngwang ya Thungela Operations (Pty) Ltd Coal Bed Methane Production kwa mmasepaleng wa Lephalale , kwa porofenseng ya Limpopo, mo Aforika Borwa. Go bona tshedimosetso e e oketsegileng, tsweetswee leba lekwalo le le mametleletsweng.

Tsweetswee o se ka wa okaoka go ikgolaganya le rona fa o ka nna le dipotso le/kgotsa matshwenyego.

Mohlomphegi o na le Kgahlego le o Amegang ,

Imeile ye e šoma go go tsebiša ka ga sebaka sa go kgatha tema ka tshepedišong ya kgopelo ya tumelelo ya tikologo ya protšeke ye e šišintšwego ya Thungela Operations (Pty) Ltd Coal Bed Methane ka Masepaleng wa Selegae wa Lephalale, Profenseng ya Limpopo, Afrika Borwa. Ge o nyaka tshedimošo ka botlalo, hle etela tokumente ye e lego ka tlase.

O se dikadike go ikgokaganya le rena ge o na le dipotšišo goba dipelaelo.

Regards,

EIMS Public Participation Team

TO: Elizabeth Kelly FROM: EIMS Public Participation Team

DEPARTMENT: Municipal Manager REF: 1590

COMPANY: Waterberg District Municipality DATE: 20 March 2026

FAX: PAGES: 10

RE: Notification: Opportunity to participate in the Proposed Thungela Operations (Pty) Ltd Coal Bed Methane Production Project

Dear Interested and Affected Party,

This email serves to notify you of the opportunity to participate in the Environmental Authorisation application process for the proposed Thungela Operations (Pty) Ltd Coal Bed Methane Production project in the Lephalale Local Municipality, Limpopo Province, South Africa. For more information, please refer to the attached document.

Please do not hesitate to contact us should you have any queries and/or concerns.

Geagte Geregistreerde Belanghebbende en Geaffekteerde Party,

Hierdie e-pos dien om jou in kennis te stel van die geleentheid om deel te neem aan Omgewingsmagtigingsproses vir die Voorgestelde Thungela Bedrywigheide (Edms) Bpk Steenkoolbedmetaanproduksieprojek in die Lephalale Plaaslike Munisipaliteit, Limpopo Provinsie, Suid-Afrika. Vir meer inligting, verwys asseblief na die aangehegte dokument.

Moet asseblief nie huiwer om ons te kontak indien jy enige vrae en/of bekommernisse het nie.

Motlotlegi yo o amegang le yo o amegang,

Imeile eno e go itsise ka tshono ya go nna le seabe mo thulaganyong ya go dira kopo ya tetla ya tikologo ya porojeke e e tshitshinngwang ya Thungela Operations (Pty) Ltd Coal Bed Methane Production kwa mmasepaleng wa Lephalale , kwa porofenseng ya Limpopo, mo Aforika Borwa. Go bona tshedimosetso e e oketsegileng, tsweetswee leba lekwalo le le mametleletsweng.

Tsweetswee o se ka wa okaoka go ikgolaganya le rona fa o ka nna le dipotso le/kgotsa matshwenyego.

Mohlomphegi o na le Kgahlego le o Amegang ,

Imeile ye e šoma go go tsebiša ka ga sebaka sa go kgatha tema ka tshepedišong ya kgopelo ya tumelelo ya tikologo ya protšeke ye e šišintšwego ya Thungela Operations (Pty) Ltd Coal Bed Methane ka Masepaleng wa Selegae wa Lephalale, Profenseng ya Limpopo, Afrika Borwa. Ge o nyaka tshedimošo ka botlalo, hle etela tokumente ye e lego ka tlase.

O se dikadike go ikgokaganya le rena ge o na le dipotšišo goba dipelaelo.

Regards,

EIMS Public Participation Team

TO:	FROM: EIMS Public Participation Team
DEPARTMENT : Corporate Office	REF: 1590
COMPANY: Agricultural Research Council	DATE: 20 March 2026
FAX:	PAGES: 10
RE:	Notification: Opportunity to participate in the Proposed Thungela Operations (Pty) Ltd Coal Bed Methane Production Project

Dear Interested and Affected Party,

This email serves to notify you of the opportunity to participate in the Environmental Authorisation application process for the proposed Thungela Operations (Pty) Ltd Coal Bed Methane Production project in the Lephalale Local Municipality, Limpopo Province, South Africa. For more information, please refer to the attached document.

Please do not hesitate to contact us should you have any queries and/or concerns.

Geagte Geregistreerde Belanghebbende en Geaffekteerde Party,

Hierdie e-pos dien om jou in kennis te stel van die geleentheid om deel te neem aan Omgewingsmagtigingsproses vir die Voorgestelde Thungela Bedrywighede (Edms) Bpk Steenkoolbedmetaanproduksieprojek in die Lephalale Plaaslike Munisipaliteit, Limpopo Provinsie, Suid-Afrika. Vir meer inligting, verwys asseblief na die aangehegte dokument.

Moet asseblief nie huiwer om ons te kontak indien jy enige vrae en/of bekommernisse het nie.

Motlotlegi yo o amegang le yo o amegang,

Imeile eno e go itsise ka tshono ya go nna le seabe mo thulaganyong ya go dira kopo ya tetla ya tikologo ya porojeke e e tshitshinngwang ya Thungela Operations (Pty) Ltd Coal Bed Methane Production kwa mmasepaleng wa Lephalale , kwa porofenseng ya Limpopo, mo Aforika Borwa. Go bona tshedimosetso e e oketsegileng, tsweetswee leba lekwalo le le mametleletsweng.

Tsweetswee o se ka wa okaoka go ikgolaganya le rona fa o ka nna le dipotso le/kgotsa matshwenyego.

Mohlomphegi o na le Kgahlego le o Amegang ,

Imeile ye e šoma go go tsebiša ka ga sebaka sa go kgatha tema ka tshepedišong ya kgopelo ya tumelelo ya tikologo ya protšeke ye e šišintšwego ya Thungela Operations (Pty) Ltd Coal Bed Methane ka Masepaleng wa Selegae wa Lephalale, Profenseng ya Limpopo, Afrika Borwa. Ge o nyaka tshedimošo ka botlalo, hle etela tokumente ye e lego ka tlase.

O se dikadike go ikgokaganya le rena ge o na le dipotšišo goba dipelaelo.

Regards,

EIMS Public Participation Team

TO: M.J Maeko FROM: EIMS Public Participation Team

DEPARTMENT : Executive Mayor REF: 1590

COMPANY: Lephalale Local Municipality DATE: 20 March 2026

FAX: PAGES: 10

RE: Notification: Opportunity to participate in the Proposed Thungela Operations (Pty) Ltd Coal Bed Methane Production Project

Dear Interested and Affected Party,

This email serves to notify you of the opportunity to participate in the Environmental Authorisation application process for the proposed Thungela Operations (Pty) Ltd Coal Bed Methane Production project in the Lephalale Local Municipality, Limpopo Province, South Africa. For more information, please refer to the attached document.

Please do not hesitate to contact us should you have any queries and/or concerns.

Geagte Geregistreerde Belanghebbende en Geaffekteerde Party,

Hierdie e-pos dien om jou in kennis te stel van die geleentheid om deel te neem aan Omgewingsmagtigingsproses vir die Voorgestelde Thungela Bedrywighede (Edms) Bpk Steenkoolbedmetaanproduksieprojek in die Lephalale Plaaslike Munisipaliteit, Limpopo Provinsie, Suid-Afrika. Vir meer inligting, verwys asseblief na die aangehegte dokument.

Moet asseblief nie huiwer om ons te kontak indien jy enige vrae en/of bekommernisse het nie.

Motlotlegi yo o amegang le yo o amegang,

Imeile eno e go itsise ka tshono ya go nna le seabe mo thulaganyong ya go dira kopo ya tetla ya tikologo ya porojeke e e tshitshinngwang ya Thungela Operations (Pty) Ltd Coal Bed Methane Production kwa mmasepaleng wa Lephalale , kwa porofenseng ya Limpopo, mo Aforika Borwa. Go bona tshedimosetso e e oketsegileng, tsweetswee leba lekwalo le le mametleletsweng.

Tsweetswee o se ka wa okaoka go ikgolaganya le rona fa o ka nna le dipotso le/kgotsa matshwenyego.

Mohlomphegi o na le Kgahlego le o Amegang ,

Imeile ye e šoma go go tsebiša ka ga sebaka sa go kgatha tema ka tshepedišong ya kgopelo ya tumelelo ya tikologo ya protšeke ye e šišintšwego ya Thungela Operations (Pty) Ltd Coal Bed Methane ka Masepaleng wa Selegae wa Lephalale, Profenseng ya Limpopo, Afrika Borwa. Ge o nyaka tshedimošo ka botlalo, hle etela tokumente ye e lego ka tlase.

O se dikadike go ikgokaganya le rena ge o na le dipotšišo goba dipelaelo.

Regards,

EIMS Public Participation Team

TO: FROM: EIMS Public Participation Team

DEPARTMENT : Office REF: 1590

COMPANY: Limpopo Department of Sport, Arts and DATE: 20 March 2026
Culture

FAX: PAGES: 10

RE: Notification: Opportunity to participate in the Proposed Thungela Operations (Pty) Ltd Coal Bed Methane Production Project

Dear Interested and Affected Party,

This email serves to notify you of the opportunity to participate in the Environmental Authorisation application process for the proposed Thungela Operations (Pty) Ltd Coal Bed Methane Production project in the Lephalale Local Municipality, Limpopo Province, South Africa. For more information, please refer to the attached document.

Please do not hesitate to contact us should you have any queries and/or concerns.

Geagte Geregistreerde Belanghebbende en Geaffekteerde Party,

Hierdie e-pos dien om jou in kennis te stel van die geleentheid om deel te neem aan Omgewingsmagtigingsproses vir die Voorgestelde Thungela Bedrywighede (Edms) Bpk Steenkoolbedmetaanproduksieprojek in die Lephalale Plaaslike Munisipaliteit, Limpopo Provinsie, Suid-Afrika. Vir meer inligting, verwys asseblief na die aangehegte dokument.

Moet asseblief nie huiwer om ons te kontak indien jy enige vrae en/of bekommernisse het nie.

Motlotlegi yo o amegang le yo o amegang,

Imeile eno e go itsise ka tshono ya go nna le seabe mo thulaganyong ya go dira kopo ya tetla ya tikologo ya porojeke e e tshitshinngwang ya Thungela Operations (Pty) Ltd Coal Bed Methane Production kwa mmasepaleng wa Lephalale , kwa porofenseng ya Limpopo, mo Aforika Borwa. Go bona tshedimosetso e e oketsegileng, tsweetswee leba lekwalo le le mametleletsweng.

Tsweetswee o se ka wa okaoka go ikgolaganya le rona fa o ka nna le dipotso le/kgotsa matshwenyego.

Mohlomphegi o na le Kgahlego le o Amegang ,

Imeile ye e šoma go go tsebiša ka ga sebaka sa go kgatha tema ka tshepedišong ya kgopelo ya tumelelo ya tikologo ya protšeke ye e šišintšwego ya Thungela Operations (Pty) Ltd Coal Bed Methane ka Masepaleng wa Selegae wa Lephalale, Profenseng ya Limpopo, Afrika Borwa. Ge o nyaka tshedimošo ka botlalo, hle etela tokumente ye e lego ka tlase.

O se dikadike go ikgolaganya le rena ge o na le dipotšišo goba dipelaelo.

Regards,

EIMS Public Participation Team

TO: FROM: EIMS Public Participation Team

DEPARTMENT : General REF: 1590

COMPANY: National Energy Regulator of South Africa DATE: 20 March 2026
(NERSA)

FAX: PAGES: 10

RE: Notification: Opportunity to participate in the Proposed Thungela Operations (Pty) Ltd Coal Bed Methane Production Project

Dear Interested and Affected Party,

This email serves to notify you of the opportunity to participate in the Environmental Authorisation application process for the proposed Thungela Operations (Pty) Ltd Coal Bed Methane Production project in the Lephalale Local Municipality, Limpopo Province, South Africa. For more information, please refer to the attached document.

Please do not hesitate to contact us should you have any queries and/or concerns.

Geagte Geregistreerde Belanghebbende en Geaffekteerde Party,

Hierdie e-pos dien om jou in kennis te stel van die geleentheid om deel te neem aan Omgewingsmagtigingsproses vir die Voorgestelde Thungela Bedrywighede (Edms) Bpk Steenkoolbedmetaanproduksieprojek in die Lephalale Plaaslike Munisipaliteit, Limpopo Provinsie, Suid-Afrika. Vir meer inligting, verwys asseblief na die aangehegte dokument.

Moet asseblief nie huiwer om ons te kontak indien jy enige vrae en/of bekommernisse het nie.

Motlotlegi yo o amegang le yo o amegang,

Imeile eno e go itsise ka tshono ya go nna le seabe mo thulaganyong ya go dira kopo ya tetla ya tikologo ya porojeke e e tshitshinngwang ya Thungela Operations (Pty) Ltd Coal Bed Methane Production kwa mmasepaleng wa Lephalale , kwa porofenseng ya Limpopo, mo Aforika Borwa. Go bona tshedimosetso e e oketsegileng, tsweetswee leba lekwalo le le mametleletsweng.

Tsweetswee o se ka wa okaoka go ikgolaganya le rona fa o ka nna le dipotso le/kgotsa matshwenyego.

Mohlomphegi o na le Kgahlego le o Amegang ,

Imeile ye e šoma go go tsebiša ka ga sebaka sa go kgatha tema ka tshepedišong ya kgopelo ya tumelelo ya tikologo ya protšeke ye e šišintšwego ya Thungela Operations (Pty) Ltd Coal Bed Methane ka Masepaleng wa Selegae wa Lephalale, Profenseng ya Limpopo, Afrika Borwa. Ge o nyaka tshedimošo ka botlalo, hle etela tokumente ye e lego ka tlase.

O se dikadike go ikgolaganya le rena ge o na le dipotšišo goba dipelaelo.

Regards,

EIMS Public Participation Team

TO:	Phopolo Maubane	FROM:	EIMS Public Participation Team
DEPARTMENT:	Chairperson	REF:	1590
COMPANY:	National House of Traditional Leaders	DATE:	20 March 2026
FAX:		PAGES:	10
RE:	Notification: Opportunity to participate in the Proposed Thungela Operations (Pty) Ltd Coal Bed Methane Production Project		

Dear Interested and Affected Party,

This email serves to notify you of the opportunity to participate in the Environmental Authorisation application process for the proposed Thungela Operations (Pty) Ltd Coal Bed Methane Production project in the Lephalale Local Municipality, Limpopo Province, South Africa. For more information, please refer to the attached document.

Please do not hesitate to contact us should you have any queries and/or concerns.

Geagte Geregistreerde Belanghebbende en Geaffekteerde Party,

Hierdie e-pos dien om jou in kennis te stel van die geleentheid om deel te neem aan Omgewingsmagtigingsproses vir die Voorgestelde Thungela Bedrywigheide (Edms) Bpk Steenkoolbedmetaanproduksieprojek in die Lephalale Plaaslike Munisipaliteit, Limpopo Provinsie, Suid-Afrika. Vir meer inligting, verwys asseblief na die aangehegte dokument.

Moet asseblief nie huiwer om ons te kontak indien jy enige vrae en/of bekommernisse het nie.

Motlotlegi yo o amegang le yo o amegang,

Imeile eno e go itsise ka tshono ya go nna le seabe mo thulaganyong ya go dira kopo ya tetla ya tikologo ya porojeke e e tshitshinngwang ya Thungela Operations (Pty) Ltd Coal Bed Methane Production kwa mmasepaleng wa Lephalale , kwa porofenseng ya Limpopo, mo Aforika Borwa. Go bona tshedimosetso e e oketsegileng, tsweetswee leba lekwalo le le mametleletsweng.

Tsweetswee o se ka wa okaoka go ikgolaganya le rona fa o ka nna le dipotso le/kgotsa matshwenyego.

Mohlomphegi o na le Kgahlego le o Amegang ,

Imeile ye e šoma go go tsebiša ka ga sebaka sa go kgatha tema ka tshepedišong ya kgopelo ya tumelelo ya tikologo ya protšeke ye e šišintšwego ya Thungela Operations (Pty) Ltd Coal Bed Methane ka Masepaleng wa Selegae wa Lephalale, Profenseng ya Limpopo, Afrika Borwa. Ge o nyaka tshedimošo ka botlalo, hle etela tokumente ye e lego ka tlase.

O se dikadike go ikgokaganya le rena ge o na le dipotšišo goba dipelaelo.

Regards,

EIMS Public Participation Team

TO: John Geeringh FROM: EIMS Public Participation Team

DEPARTMENT: Senior Environmental Adviser: Land REF: 1590
Management

COMPANY: Eskom DATE: 20 March 2026

FAX: PAGES: 10

RE: Notification: Opportunity to participate in the Proposed Thungela Operations (Pty) Ltd Coal Bed Methane Production Project

Dear Interested and Affected Party,

This email serves to notify you of the opportunity to participate in the Environmental Authorisation application process for the proposed Thungela Operations (Pty) Ltd Coal Bed Methane Production project in the Lephalale Local Municipality, Limpopo Province, South Africa. For more information, please refer to the attached document.

Please do not hesitate to contact us should you have any queries and/or concerns.

Geagte Geregistreerde Belanghebbende en Geaffekteerde Party,

Hierdie e-pos dien om jou in kennis te stel van die geleentheid om deel te neem aan Omgewingsmagtigingsproses vir die Voorgestelde Thungela Bedrywighede (Edms) Bpk Steenkoolbedmetaanproduksieprojek in die Lephalale Plaaslike Munisipaliteit, Limpopo Provinsie, Suid-Afrika. Vir meer inligting, verwys asseblief na die aangehegte dokument.

Moet asseblief nie huiwer om ons te kontak indien jy enige vrae en/of bekommernisse het nie.

Motlotlegi yo o amegang le yo o amegang,

Imeile eno e go itsise ka tshono ya go nna le seabe mo thulaganyong ya go dira kopo ya tetla ya tikologo ya porojeke e e tshitshinngwang ya Thungela Operations (Pty) Ltd Coal Bed Methane Production kwa mmasepaleng wa Lephalale , kwa porofenseng ya Limpopo, mo Aforika Borwa. Go bona tshedimosetso e e oketsegileng, tsweetswee leba lekwalo le le mametleletsweng.

Tsweetswee o se ka wa okaoka go ikgolaganya le rona fa o ka nna le dipotso le/kgotsa matshwenyego.

Mohlomphegi o na le Kgahlego le o Amegang ,

Imeile ye e šoma go go tsebiša ka ga sebaka sa go kgatha tema ka tshepedišong ya kgopelo ya tumelelo ya tikologo ya protšeke ye e šišintšwego ya Thungela Operations (Pty) Ltd Coal Bed Methane ka Masepaleng wa Selegae wa Lephalale, Profenseng ya Limpopo, Afrika Borwa. Ge o nyaka tshedimošo ka botlalo, hle etela tokumente ye e lego ka tlase.

O se dikadike go ikgolaganya le rena ge o na le dipotšišo goba dipelaelo.

Regards,

EIMS Public Participation Team

TO:	Kenva Mboweni	FROM:	EIMS Public Participation Team
DEPARTMENT:	Lephalale	REF:	1590
COMPANY:	LEDET	DATE:	20 March 2026
FAX:		PAGES:	10
RE:	Notification: Opportunity to participate in the Proposed Thungela Operations (Pty) Ltd Coal Bed Methane Production Project		

Dear Interested and Affected Party,

This email serves to notify you of the opportunity to participate in the Environmental Authorisation application process for the proposed Thungela Operations (Pty) Ltd Coal Bed Methane Production project in the Lephalale Local Municipality, Limpopo Province, South Africa. For more information, please refer to the attached document.

Please do not hesitate to contact us should you have any queries and/or concerns.

Geagte Geregistreerde Belanghebbende en Geaffekteerde Party,

Hierdie e-pos dien om jou in kennis te stel van die geleentheid om deel te neem aan Omgewingsmagtigingsproses vir die Voorgestelde Thungela Bedrywighede (Edms) Bpk Steenkoolbedmetaanproduksieprojek in die Lephalale Plaaslike Munisipaliteit, Limpopo Provinsie, Suid-Afrika. Vir meer inligting, verwys asseblief na die aangehegte dokument.

Moet asseblief nie huiwer om ons te kontak indien jy enige vrae en/of bekommernisse het nie.

Motlotlegi yo o amegang le yo o amegang,

Imeile eno e go itsise ka tshono ya go nna le seabe mo thulaganyong ya go dira kopo ya tetla ya tikologo ya porojeke e e tshitshinngwang ya Thungela Operations (Pty) Ltd Coal Bed Methane Production kwa mmasepaleng wa Lephalale , kwa porofenseng ya Limpopo, mo Aforika Borwa. Go bona tshedimosetso e e oketsegileng, tsweetswee leba lekwalo le le mametleletsweng.

Tsweetswee o se ka wa okaoka go ikgolaganya le rona fa o ka nna le dipotso le/kgotsa matshwenyego.

Mohlomphegi o na le Kgahlego le o Amegang ,

Imeile ye e šoma go go tsebiša ka ga sebaka sa go kgatha tema ka tshepedišong ya kgopelo ya tumelelo ya tikologo ya protšeke ye e šišintšwego ya Thungela Operations (Pty) Ltd Coal Bed Methane ka Masepaleng wa Selegae wa Lephalale, Profenseng ya Limpopo, Afrika Borwa. Ge o nyaka tshedimošo ka botlalo, hle etela tokumente ye e lego ka tlase.

O se dikadike go ikgokaganya le rena ge o na le dipotšišo goba dipelaelo.

Regards,

EIMS Public Participation Team

TO: FROM: EIMS Public Participation Team

DEPARTMENT : Ministry of Investment, Trade and Industry REF: 1590

COMPANY: Botswana National Authority DATE: 20 March 2026

FAX: PAGES: 10

RE: Notification: Opportunity to participate in the Proposed Thungela Operations (Pty) Ltd Coal Bed Methane Production Project

Dear Interested and Affected Party,

This email serves to notify you of the opportunity to participate in the Environmental Authorisation application process for the proposed Thungela Operations (Pty) Ltd Coal Bed Methane Production project in the Lephalale Local Municipality, Limpopo Province, South Africa. For more information, please refer to the attached document.

Please do not hesitate to contact us should you have any queries and/or concerns.

Geagte Geregistreerde Belanghebbende en Geaffekteerde Party,

Hierdie e-pos dien om jou in kennis te stel van die geleentheid om deel te neem aan Omgewingsmagtigingsproses vir die Voorgestelde Thungela Bedrywighede (Edms) Bpk Steenkoolbedmetaanproduksieprojek in die Lephalale Plaaslike Munisipaliteit, Limpopo Provinsie, Suid-Afrika. Vir meer inligting, verwys asseblief na die aangehegte dokument.

Moet asseblief nie huiwer om ons te kontak indien jy enige vrae en/of bekommernisse het nie.

Motlotlegi yo o amegang le yo o amegang,

Imeile eno e go itsise ka tshono ya go nna le seabe mo thulaganyong ya go dira kopo ya tetla ya tikologo ya porojeke e e tshitshinngwang ya Thungela Operations (Pty) Ltd Coal Bed Methane Production kwa mmasepaleng wa Lephalale , kwa porofenseng ya Limpopo, mo Aforika Borwa. Go bona tshedimosetso e e oketsegileng, tsweetswee leba lekwalo le le mametleletsweng.

Tsweetswee o se ka wa okaoka go ikgolaganya le rona fa o ka nna le dipotso le/kgotsa matshwenyego.

Mohlomphegi o na le Kgahlego le o Amegang ,

Imeile ye e šoma go go tsebiša ka ga sebaka sa go kgatha tema ka tshepedišong ya kgopelo ya tumelelo ya tikologo ya protšeke ye e šišintšwego ya Thungela Operations (Pty) Ltd Coal Bed Methane ka Masepaleng wa Selegae wa Lephalale, Profenseng ya Limpopo, Afrika Borwa. Ge o nyaka tshedimošo ka botlalo, hle etela tokumente ye e lego ka tlase.

O se dikadike go ikgokaganya le rena ge o na le dipotšišo goba dipelaelo.

Regards,

EIMS Public Participation Team

TO: Martha FROM: EIMS Public Participation Team

DEPARTMENT : Speaker REF: 1590

COMPANY: Waterberg District Municipality DATE: 20 March 2026

FAX: PAGES: 10

RE: Notification: Opportunity to participate in the Proposed Thungela Operations (Pty) Ltd Coal Bed Methane Production Project

Dear Interested and Affected Party,

This email serves to notify you of the opportunity to participate in the Environmental Authorisation application process for the proposed Thungela Operations (Pty) Ltd Coal Bed Methane Production project in the Lephalale Local Municipality, Limpopo Province, South Africa. For more information, please refer to the attached document.

Please do not hesitate to contact us should you have any queries and/or concerns.

Geagte Geregistreerde Belanghebbende en Geaffekteerde Party,

Hierdie e-pos dien om jou in kennis te stel van die geleentheid om deel te neem aan Omgewingsmagtigingsproses vir die Voorgestelde Thungela Bedrywighede (Edms) Bpk Steenkoolbedmetaanproduksieprojek in die Lephalale Plaaslike Munisipaliteit, Limpopo Provinsie, Suid-Afrika. Vir meer inligting, verwys asseblief na die aangehegte dokument.

Moet asseblief nie huiwer om ons te kontak indien jy enige vrae en/of bekommernisse het nie.

Motlotlegi yo o amegang le yo o amegang,

Imeile eno e go itsise ka tshono ya go nna le seabe mo thulaganyong ya go dira kopo ya tetla ya tikologo ya porojeke e e tshitshinngwang ya Thungela Operations (Pty) Ltd Coal Bed Methane Production kwa mmasepaleng wa Lephalale , kwa porofenseng ya Limpopo, mo Aforika Borwa. Go bona tshedimosetso e e oketsegileng, tsweetswee leba lekwalo le le mametleletsweng.

Tsweetswee o se ka wa okaoka go ikgolaganya le rona fa o ka nna le dipotso le/kgotsa matshwenyego.

Mohlomphegi o na le Kgahlego le o Amegang ,

Imeile ye e šoma go go tsebiša ka ga sebaka sa go kgatha tema ka tshepedišong ya kgopelo ya tumelelo ya tikologo ya protšeke ye e šišintšwego ya Thungela Operations (Pty) Ltd Coal Bed Methane ka Masepaleng wa Selegae wa Lephalale, Profenseng ya Limpopo, Afrika Borwa. Ge o nyaka tshedimošo ka botlalo, hle etela tokumente ye e lego ka tlase.

O se dikadike go ikgokaganya le rena ge o na le dipotšišo goba dipelaelo.

Regards,

EIMS Public Participation Team

TO: Mabora Mampa FROM: EIMS Public Participation Team

DEPARTMENT: Municipal Manager REF: 1590

COMPANY: Waterberg District Municipality DATE: 20 March 2026

FAX: PAGES: 10

RE: Notification: Opportunity to participate in the Proposed Thungela Operations (Pty) Ltd Coal Bed Methane Production Project

Dear Interested and Affected Party,

This email serves to notify you of the opportunity to participate in the Environmental Authorisation application process for the proposed Thungela Operations (Pty) Ltd Coal Bed Methane Production project in the Lephalale Local Municipality, Limpopo Province, South Africa. For more information, please refer to the attached document.

Please do not hesitate to contact us should you have any queries and/or concerns.

Geagte Geregistreerde Belanghebbende en Geaffekteerde Party,

Hierdie e-pos dien om jou in kennis te stel van die geleentheid om deel te neem aan Omgewingsmagtigingsproses vir die Voorgestelde Thungela Bedrywighede (Edms) Bpk Steenkoolbedmetaanproduksieprojek in die Lephalale Plaaslike Munisipaliteit, Limpopo Provinsie, Suid-Afrika. Vir meer inligting, verwys asseblief na die aangehegte dokument.

Moet asseblief nie huiwer om ons te kontak indien jy enige vrae en/of bekommernisse het nie.

Motlotlegi yo o amegang le yo o amegang,

Imeile eno e go itsise ka tshono ya go nna le seabe mo thulaganyong ya go dira kopo ya tetla ya tikologo ya porojeke e e tshitshinngwang ya Thungela Operations (Pty) Ltd Coal Bed Methane Production kwa mmasepaleng wa Lephalale , kwa porofenseng ya Limpopo, mo Aforika Borwa. Go bona tshedimosetso e e oketsegileng, tsweetswee leba lekwalo le le mametleletsweng.

Tsweetswee o se ka wa okaoka go ikgolaganya le rona fa o ka nna le dipotso le/kgotsa matshwenyego.

Mohlomphegi o na le Kgahlego le o Amegang ,

Imeile ye e šoma go go tsebiša ka ga sebaka sa go kgatha tema ka tshepedišong ya kgopelo ya tumelelo ya tikologo ya protšeke ye e šišintšwego ya Thungela Operations (Pty) Ltd Coal Bed Methane ka Masepaleng wa Selegae wa Lephalale, Profenseng ya Limpopo, Afrika Borwa. Ge o nyaka tshedimošo ka botlalo, hle etela tokumente ye e lego ka tlase.

O se dikadike go ikgokaganya le rena ge o na le dipotšišo goba dipelaelo.

Regards,

EIMS Public Participation Team

TO:	S.M Mataboge	FROM:	EIMS Public Participation Team
DEPARTMENT :	Executive Mayor	REF:	1590
COMPANY:	Waterberg District Municipality	DATE:	20 March 2026
FAX:		PAGES:	10
RE:	Notification: Opportunity to participate in the Proposed Thungela Operations (Pty) Ltd Coal Bed Methane Production Project		

Dear Interested and Affected Party,

This email serves to notify you of the opportunity to participate in the Environmental Authorisation application process for the proposed Thungela Operations (Pty) Ltd Coal Bed Methane Production project in the Lephalale Local Municipality, Limpopo Province, South Africa. For more information, please refer to the attached document.

Please do not hesitate to contact us should you have any queries and/or concerns.

Geagte Geregistreerde Belanghebbende en Geaffekteerde Party,

Hierdie e-pos dien om jou in kennis te stel van die geleentheid om deel te neem aan Omgewingsmagtigingsproses vir die Voorgestelde Thungela Bedrywighede (Edms) Bpk Steenkoolbedmetaanproduksieprojek in die Lephalale Plaaslike Munisipaliteit, Limpopo Provinsie, Suid-Afrika. Vir meer inligting, verwys asseblief na die aangehegte dokument.

Moet asseblief nie huiwer om ons te kontak indien jy enige vrae en/of bekommernisse het nie.

Motlotlegi yo o amegang le yo o amegang,

Imeile eno e go itsise ka tshono ya go nna le seabe mo thulaganyong ya go dira kopo ya tetla ya tikologo ya porojeke e e tshitshinngwang ya Thungela Operations (Pty) Ltd Coal Bed Methane Production kwa mmasepaleng wa Lephalale , kwa porofenseng ya Limpopo, mo Aforika Borwa. Go bona tshedimosetso e e oketsegileng, tsweetswee leba lekwalo le le mametleletsweng.

Tsweetswee o se ka wa okaoka go ikgolaganya le rona fa o ka nna le dipotso le/kgotsa matshwenyego.

Mohlomphegi o na le Kgahlego le o Amegang ,

Imeile ye e šoma go go tsebiša ka ga sebaka sa go kgatha tema ka tshepedišong ya kgopelo ya tumelelo ya tikologo ya protšeke ye e šišintšwego ya Thungela Operations (Pty) Ltd Coal Bed Methane ka Masepaleng wa Selegae wa Lephalale, Profenseng ya Limpopo, Afrika Borwa. Ge o nyaka tshedimošo ka botlalo, hle etela tokumente ye e lego ka tlase.

O se dikadike go ikgokaganya le rena ge o na le dipotšišo goba dipelaelo.

Regards,

EIMS Public Participation Team

TO:	FROM: EIMS Public Participation Team
DEPARTMENT : Office of the Municipal Manager	REF: 1590
COMPANY: Lephalale Local Municipality	DATE: 20 March 2026
FAX:	PAGES: 10
RE:	Notification: Opportunity to participate in the Proposed Thungela Operations (Pty) Ltd Coal Bed Methane Production Project

Dear Interested and Affected Party,

This email serves to notify you of the opportunity to participate in the Environmental Authorisation application process for the proposed Thungela Operations (Pty) Ltd Coal Bed Methane Production project in the Lephalale Local Municipality, Limpopo Province, South Africa. For more information, please refer to the attached document.

Please do not hesitate to contact us should you have any queries and/or concerns.

Geagte Geregistreerde Belanghebbende en Geaffekteerde Party,

Hierdie e-pos dien om jou in kennis te stel van die geleentheid om deel te neem aan Omgewingsmagtigingsproses vir die Voorgestelde Thungela Bedrywighede (Edms) Bpk Steenkoolbedmetaanproduksieprojek in die Lephalale Plaaslike Munisipaliteit, Limpopo Provinsie, Suid-Afrika. Vir meer inligting, verwys asseblief na die aangehegte dokument.

Moet asseblief nie huiwer om ons te kontak indien jy enige vrae en/of bekommernisse het nie.

Motlotlegi yo o amegang le yo o amegang,

Imeile eno e go itsise ka tshono ya go nna le seabe mo thulaganyong ya go dira kopo ya tetla ya tikologo ya porojeke e e tshitshinngwang ya Thungela Operations (Pty) Ltd Coal Bed Methane Production kwa mmasepaleng wa Lephalale , kwa porofenseng ya Limpopo, mo Aforika Borwa. Go bona tshedimosetso e e oketsegileng, tsweetswee leba lekwalo le le mametleletsweng.

Tsweetswee o se ka wa okaoka go ikgolaganya le rona fa o ka nna le dipotso le/kgotsa matshwenyego.

Mohlomphegi o na le Kgahlego le o Amegang ,

Imeile ye e šoma go go tsebiša ka ga sebaka sa go kgatha tema ka tshepedišong ya kgopelo ya tumelelo ya tikologo ya protšeke ye e šišintšwego ya Thungela Operations (Pty) Ltd Coal Bed Methane ka Masepaleng wa Selegae wa Lephalale, Profenseng ya Limpopo, Afrika Borwa. Ge o nyaka tshedimošo ka botlalo, hle etela tokumente ye e lego ka tlase.

O se dikadike go ikgokaganya le rena ge o na le dipotšišo goba dipelaelo.

Regards,

EIMS Public Participation Team

TO:	Nakedi Maake	FROM:	EIMS Public Participation Team
DEPARTMENT:	Regional Administrator	REF:	1590
COMPANY:	Num Rustenburg	DATE:	20 March 2026
FAX:		PAGES:	10
RE:	Notification: Opportunity to participate in the Proposed Thungela Operations (Pty) Ltd Coal Bed Methane Production Project		

Dear Interested and Affected Party,

This email serves to notify you of the opportunity to participate in the Environmental Authorisation application process for the proposed Thungela Operations (Pty) Ltd Coal Bed Methane Production project in the Lephalale Local Municipality, Limpopo Province, South Africa. For more information, please refer to the attached document.

Please do not hesitate to contact us should you have any queries and/or concerns.

Geagte Geregistreerde Belanghebbende en Geaffekteerde Party,

Hierdie e-pos dien om jou in kennis te stel van die geleentheid om deel te neem aan Omgewingsmagtigingsproses vir die Voorgestelde Thungela Bedrywighede (Edms) Bpk Steenkoolbedmetaanproduksieprojek in die Lephalale Plaaslike Munisipaliteit, Limpopo Provinsie, Suid-Afrika. Vir meer inligting, verwys asseblief na die aangehegte dokument.

Moet asseblief nie huiwer om ons te kontak indien jy enige vrae en/of bekommernisse het nie.

Motlotlegi yo o amegang le yo o amegang,

Imeile eno e go itsise ka tshono ya go nna le seabe mo thulaganyong ya go dira kopo ya tetla ya tikologo ya porojeke e e tshitshinngwang ya Thungela Operations (Pty) Ltd Coal Bed Methane Production kwa mmasepaleng wa Lephalale , kwa porofenseng ya Limpopo, mo Aforika Borwa. Go bona tshedimosetso e e oketsegileng, tsweetswee leba lekwalo le le mametleletsweng.

Tsweetswee o se ka wa okaoka go ikgolaganya le rona fa o ka nna le dipotso le/kgotsa matshwenyego.

Mohlomphegi o na le Kgahlego le o Amegang ,

Imeile ye e šoma go go tsebiša ka ga sebaka sa go kgatha tema ka tshepedišong ya kgopelo ya tumelelo ya tikologo ya protšeke ye e šišintšwego ya Thungela Operations (Pty) Ltd Coal Bed Methane ka Masepaleng wa Selegae wa Lephalale, Profenseng ya Limpopo, Afrika Borwa. Ge o nyaka tshedimošo ka botlalo, hle etela tokumente ye e lego ka tlase.

O se dikadike go ikgokaganya le rena ge o na le dipotšišo goba dipelaelo.

Regards,

EIMS Public Participation Team

TO: Nomfundo Maseti FROM: EIMS Public Participation Team

DEPARTMENT REF: 1590

COMPANY: National Energy Regulator of South Africa DATE: 20 March 2026
(NERSA)

FAX: PAGES: 10

RE: Notification: Opportunity to participate in the Proposed Thungela Operations (Pty) Ltd Coal Bed Methane Production Project

Dear Interested and Affected Party,

This email serves to notify you of the opportunity to participate in the Environmental Authorisation application process for the proposed Thungela Operations (Pty) Ltd Coal Bed Methane Production project in the Lephalale Local Municipality, Limpopo Province, South Africa. For more information, please refer to the attached document.

Please do not hesitate to contact us should you have any queries and/or concerns.

Geagte Geregistreerde Belanghebbende en Geaffekteerde Party,

Hierdie e-pos dien om jou in kennis te stel van die geleentheid om deel te neem aan Omgewingsmagtigingsproses vir die Voorgestelde Thungela Bedrywigheide (Edms) Bpk Steenkoolbedmetaanproduksieprojek in die Lephalale Plaaslike Munisipaliteit, Limpopo Provinsie, Suid-Afrika. Vir meer inligting, verwys asseblief na die aangehegte dokument.

Moet asseblief nie huiwer om ons te kontak indien jy enige vrae en/of bekommernisse het nie.

Motlotlegi yo o amegang le yo o amegang,

Imeile eno e go itsise ka tshono ya go nna le seabe mo thulaganyong ya go dira kopo ya tetla ya tikologo ya porojeke e e tshitshinngwang ya Thungela Operations (Pty) Ltd Coal Bed Methane Production kwa mmasepaleng wa Lephalale , kwa porofenseng ya Limpopo, mo Aforika Borwa. Go bona tshedimosetso e e oketsegileng, tsweetswee leba lekwalo le le mametleletsweng.

Tsweetswee o se ka wa okaoka go ikgolaganya le rona fa o ka nna le dipotso le/kgotsa matshwenyego.

Mohlomphegi o na le Kgahlego le o Amegang ,

Imeile ye e šoma go go tsebiša ka ga sebaka sa go kgatha tema ka tshepedišong ya kgopelo ya tumelelo ya tikologo ya protšeke ye e šišintšwego ya Thungela Operations (Pty) Ltd Coal Bed Methane ka Masepaleng wa Selegae wa Lephalale, Profenseng ya Limpopo, Afrika Borwa. Ge o nyaka tshedimošo ka botlalo, hle etela tokumente ye e lego ka tlase.

O se dikadike go ikgolaganya le rena ge o na le dipotšišo goba dipelaelo.

Regards,

EIMS Public Participation Team

TO:	MM Moloantoa	FROM:	EIMS Public Participation Team
DEPARTMENT: Principal		REF:	1590
COMPANY:	Phegelelo High School	DATE:	20 March 2026
FAX:		PAGES:	10
RE:	Notification: Opportunity to participate in the Proposed Thungela Operations (Pty) Ltd Coal Bed Methane Production Project		

Dear Interested and Affected Party,

This email serves to notify you of the opportunity to participate in the Environmental Authorisation application process for the proposed Thungela Operations (Pty) Ltd Coal Bed Methane Production project in the Lephalale Local Municipality, Limpopo Province, South Africa. For more information, please refer to the attached document.

Please do not hesitate to contact us should you have any queries and/or concerns.

Geagte Geregistreerde Belanghebbende en Geaffekteerde Party,

Hierdie e-pos dien om jou in kennis te stel van die geleentheid om deel te neem aan Omgewingsmagtigingsproses vir die Voorgestelde Thungela Bedrywighede (Edms) Bpk Steenkoolbedmetaanproduksieprojek in die Lephalale Plaaslike Munisipaliteit, Limpopo Provinsie, Suid-Afrika. Vir meer inligting, verwys asseblief na die aangehegte dokument.

Moet asseblief nie huiwer om ons te kontak indien jy enige vrae en/of bekommernisse het nie.

Motlotlegi yo o amegang le yo o amegang,

Imeile eno e go itsise ka tshono ya go nna le seabe mo thulaganyong ya go dira kopo ya tetla ya tikologo ya porojeke e e tshitshinngwang ya Thungela Operations (Pty) Ltd Coal Bed Methane Production kwa mmasepaleng wa Lephalale , kwa porofenseng ya Limpopo, mo Aforika Borwa. Go bona tshedimosetso e e oketsegileng, tsweetswee leba lekwalo le le mametleletsweng.

Tsweetswee o se ka wa okaoka go ikgolaganya le rona fa o ka nna le dipotso le/kgotsa matshwenyego.

Mohlomphegi o na le Kgahlego le o Amegang ,

Imeile ye e šoma go go tsebiša ka ga sebaka sa go kgatha tema ka tshepedišong ya kgopelo ya tumelelo ya tikologo ya protšeke ye e šišintšwego ya Thungela Operations (Pty) Ltd Coal Bed Methane ka Masepaleng wa Selegae wa Lephalale, Profenseng ya Limpopo, Afrika Borwa. Ge o nyaka tshedimošo ka botlalo, hle etela tokumente ye e lego ka tlase.

O se dikadike go ikgokaganya le rena ge o na le dipotšišo goba dipelaelo.

Regards,

EIMS Public Participation Team

TO: KR Molokomme FROM: EIMS Public Participation Team

DEPARTMENT : Speaker REF: 1590

COMPANY: Lephalale Local Municipality DATE: 20 March 2026

FAX: PAGES: 10

RE: Notification: Opportunity to participate in the Proposed Thungela Operations (Pty) Ltd Coal Bed Methane Production Project

Dear Interested and Affected Party,

This email serves to notify you of the opportunity to participate in the Environmental Authorisation application process for the proposed Thungela Operations (Pty) Ltd Coal Bed Methane Production project in the Lephalale Local Municipality, Limpopo Province, South Africa. For more information, please refer to the attached document.

Please do not hesitate to contact us should you have any queries and/or concerns.

Geagte Geregistreerde Belanghebbende en Geaffekteerde Party,

Hierdie e-pos dien om jou in kennis te stel van die geleentheid om deel te neem aan Omgewingsmagtigingsproses vir die Voorgestelde Thungela Bedrywighede (Edms) Bpk Steenkoolbedmetaanproduksieprojek in die Lephalale Plaaslike Munisipaliteit, Limpopo Provinsie, Suid-Afrika. Vir meer inligting, verwys asseblief na die aangehegte dokument.

Moet asseblief nie huiwer om ons te kontak indien jy enige vrae en/of bekommernisse het nie.

Motlotlegi yo o amegang le yo o amegang,

Imeile eno e go itsise ka tshono ya go nna le seabe mo thulaganyong ya go dira kopo ya tetla ya tikologo ya porojeke e e tshitshinngwang ya Thungela Operations (Pty) Ltd Coal Bed Methane Production kwa mmasepaleng wa Lephalale , kwa porofenseng ya Limpopo, mo Aforika Borwa. Go bona tshedimosetso e e oketsegileng, tsweetswee leba lekwalo le le mametleletsweng.

Tsweetswee o se ka wa okaoka go ikgolaganya le rona fa o ka nna le dipotso le/kgotsa matshwenyego.

Mohlomphegi o na le Kgahlego le o Amegang ,

Imeile ye e šoma go go tsebiša ka ga sebaka sa go kgatha tema ka tshepedišong ya kgopelo ya tumelelo ya tikologo ya protšeke ye e šišintšwego ya Thungela Operations (Pty) Ltd Coal Bed Methane ka Masepaleng wa Selegae wa Lephalale, Profenseng ya Limpopo, Afrika Borwa. Ge o nyaka tshedimošo ka botlalo, hle etela tokumente ye e lego ka tlase.

O se dikadike go ikgokaganya le rena ge o na le dipotšišo goba dipelaelo.

Regards,

EIMS Public Participation Team

TO:	Riekie Coetzee	FROM:	EIMS Public Participation Team
DEPARTMENT:	Municipal Manager: PA	REF:	1590
COMPANY:	Lephalale Local Municipality	DATE:	20 March 2026
FAX:		PAGES:	10
RE:	Notification: Opportunity to participate in the Proposed Thungela Operations (Pty) Ltd Coal Bed Methane Production Project		

Dear Interested and Affected Party,

This email serves to notify you of the opportunity to participate in the Environmental Authorisation application process for the proposed Thungela Operations (Pty) Ltd Coal Bed Methane Production project in the Lephalale Local Municipality, Limpopo Province, South Africa. For more information, please refer to the attached document.

Please do not hesitate to contact us should you have any queries and/or concerns.

Geagte Geregistreerde Belanghebbende en Geaffekteerde Party,

Hierdie e-pos dien om jou in kennis te stel van die geleentheid om deel te neem aan Omgewingsmagtigingsproses vir die Voorgestelde Thungela Bedrywighede (Edms) Bpk Steenkoolbedmetaanproduksieprojek in die Lephalale Plaaslike Munisipaliteit, Limpopo Provinsie, Suid-Afrika. Vir meer inligting, verwys asseblief na die aangehegte dokument.

Moet asseblief nie huiwer om ons te kontak indien jy enige vrae en/of bekommernisse het nie.

Motlotlegi yo o amegang le yo o amegang,

Imeile eno e go itsise ka tshono ya go nna le seabe mo thulaganyong ya go dira kopo ya tetla ya tikologo ya porojeke e e tshitshinngwang ya Thungela Operations (Pty) Ltd Coal Bed Methane Production kwa mmasepaleng wa Lephalale , kwa porofenseng ya Limpopo, mo Aforika Borwa. Go bona tshedimosetso e e oketsegileng, tsweetswee leba lekwalo le le mametleletsweng.

Tsweetswee o se ka wa okaoka go ikgolaganya le rona fa o ka nna le dipotso le/kgotsa matshwenyego.

Mohlomphegi o na le Kgahlego le o Amegang ,

Imeile ye e šoma go go tsebiša ka ga sebaka sa go kgatha tema ka tshepedišong ya kgopelo ya tumelelo ya tikologo ya protšeke ye e šišintšwego ya Thungela Operations (Pty) Ltd Coal Bed Methane ka Masepaleng wa Selegae wa Lephalale, Profenseng ya Limpopo, Afrika Borwa. Ge o nyaka tshedimošo ka botlalo, hle etela tokumente ye e lego ka tlase.

O se dikadike go ikgokaganya le rena ge o na le dipotšišo goba dipelaelo.

Regards,

EIMS Public Participation Team

TO: Motupo Seloma FROM: EIMS Public Participation Team

DEPARTMENT: CIO REF: 1590

COMPANY: Limpopo Department of Cooperative DATE: 20 March 2026
governance, Human Settlement and
Traditional Affairs

FAX: PAGES: 10

RE: Notification: Opportunity to participate in the Proposed Thungela Operations (Pty) Ltd Coal Bed
Methane Production Project

Dear Interested and Affected Party,

This email serves to notify you of the opportunity to participate in the Environmental Authorisation application process for the proposed Thungela Operations (Pty) Ltd Coal Bed Methane Production project in the Lephalale Local Municipality, Limpopo Province, South Africa. For more information, please refer to the attached document.

Please do not hesitate to contact us should you have any queries and/or concerns.

Geagte Geregistreerde Belanghebbende en Geaffekteerde Party,

Hierdie e-pos dien om jou in kennis te stel van die geleentheid om deel te neem aan Omgewingsmagtigingsproses vir die Voorgestelde Thungela Bedrywigheide (Edms) Bpk Steenkoolbedmetaanproduksieprojek in die Lephalale Plaaslike Munisipaliteit, Limpopo Provinsie, Suid-Afrika. Vir meer inligting, verwys asseblief na die aangehegte dokument.

Moet asseblief nie huiwer om ons te kontak indien jy enige vrae en/of bekommernisse het nie.

Motlotlegi yo o amegang le yo o amegang,

Imeile eno e go itsise ka tshono ya go nna le seabe mo thulaganyong ya go dira kopo ya tetla ya tikologo ya porojeke e e tshitshinngwang ya Thungela Operations (Pty) Ltd Coal Bed Methane Production kwa mmasepaleng wa Lephalale , kwa porofenseng ya Limpopo, mo Aforika Borwa. Go bona tshedimosetso e e oketsegileng, tsweetswee leba lekwalo le le mametleletsweng.

Tsweetswee o se ka wa okaoka go ikgolaganya le rona fa o ka nna le dipotso le/kgotsa matshwenyego.

Mohlomphegi o na le Kgahlego le o Amegang ,

Imeile ye e šoma go go tsebiša ka ga sebaka sa go kgatha tema ka tshepedišong ya kgopelo ya tumelelo ya tikologo ya protšeke ye e šišintšwego ya Thungela Operations (Pty) Ltd Coal Bed Methane ka Masepaleng wa Selegae wa Lephalale, Profenseng ya Limpopo, Afrika Borwa. Ge o nyaka tshedimošo ka botlalo, hle etela tokumente ye e lego ka tlase.

O se dikadike go ikgokaganya le rena ge o na le dipotšišo goba dipelaelo.

Regards,

EIMS Public Participation Team

TO:	KS Lamola	FROM:	EIMS Public Participation Team
DEPARTMENT : Speaker		REF:	1590
COMPANY:	Waterberg District Municipality	DATE:	20 March 2026
FAX:		PAGES:	10
RE:	Notification: Opportunity to participate in the Proposed Thungela Operations (Pty) Ltd Coal Bed Methane Production Project		

Dear Interested and Affected Party,

This email serves to notify you of the opportunity to participate in the Environmental Authorisation application process for the proposed Thungela Operations (Pty) Ltd Coal Bed Methane Production project in the Lephalale Local Municipality, Limpopo Province, South Africa. For more information, please refer to the attached document.

Please do not hesitate to contact us should you have any queries and/or concerns.

Geagte Geregistreerde Belanghebbende en Geaffekteerde Party,

Hierdie e-pos dien om jou in kennis te stel van die geleentheid om deel te neem aan Omgewingsmagtigingsproses vir die Voorgestelde Thungela Bedrywighede (Edms) Bpk Steenkoolbedmetaanproduksieprojek in die Lephalale Plaaslike Munisipaliteit, Limpopo Provinsie, Suid-Afrika. Vir meer inligting, verwys asseblief na die aangehegte dokument.

Moet asseblief nie huiwer om ons te kontak indien jy enige vrae en/of bekommernisse het nie.

Motlotlegi yo o amegang le yo o amegang,

Imeile eno e go itsise ka tshono ya go nna le seabe mo thulaganyong ya go dira kopo ya tetla ya tikologo ya porojeke e e tshitshinngwang ya Thungela Operations (Pty) Ltd Coal Bed Methane Production kwa mmasepaleng wa Lephalale , kwa porofenseng ya Limpopo, mo Aforika Borwa. Go bona tshedimosetso e e oketsegileng, tsweetswee leba lekwalo le le mametleletsweng.

Tsweetswee o se ka wa okaoka go ikgolaganya le rona fa o ka nna le dipotso le/kgotsa matshwenyego.

Mohlomphegi o na le Kgahlego le o Amegang ,

Imeile ye e šoma go go tsebiša ka ga sebaka sa go kgatha tema ka tshepedišong ya kgopelo ya tumelelo ya tikologo ya protšeke ye e šišintšwego ya Thungela Operations (Pty) Ltd Coal Bed Methane ka Masepaleng wa Selegae wa Lephalale, Profenseng ya Limpopo, Afrika Borwa. Ge o nyaka tshedimošo ka botlalo, hle etela tokumente ye e lego ka tlase.

O se dikadike go ikgokaganya le rena ge o na le dipotšišo goba dipelaelo.

Regards,

EIMS Public Participation Team